

Product name

CAPG antibody

Specificity

Human, Mouse, Rat; other species not tested.

Antibody description

CAPG Rabbit Polyclonal antibody. Positive IP detected in mouse heart tissue. Positive WB detected in HeLa cells, HL-60 cells, mouse heart tissue, mouse thymus tissue, rat heart tissue, rat lung tissue. Positive IF detected in MCF-7 cells. Positive IHC detected in human prostate cancer tissue, human tonsillitis tissue. Observed molecular weight by Western-blot: 39-42kd

Preparation

This antibody was obtained by immunization of CAPG recombinant protein (Accession Number: XM_011533122). Purification method: Antigen affinity purified.

Formulation

PBS with 0.1% sodium azide and 50% glycerol pH 7.3.

Storage

Store at -20°C. DO NOT ALIQUOT

Clonality

Polyclonal

Ig Type

Rabbit IgG

Applications

ELISA, WB, IHC, IF, IP

Dilutions

Recommended Dilution:

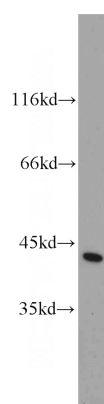
WB: 1:500-1:5000

IP: 1:200-1:2000

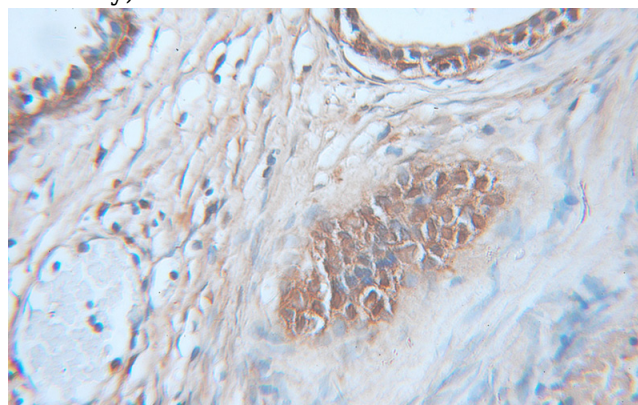
IHC: 1:20-1:200

IF: 1:20-1:200

Validations



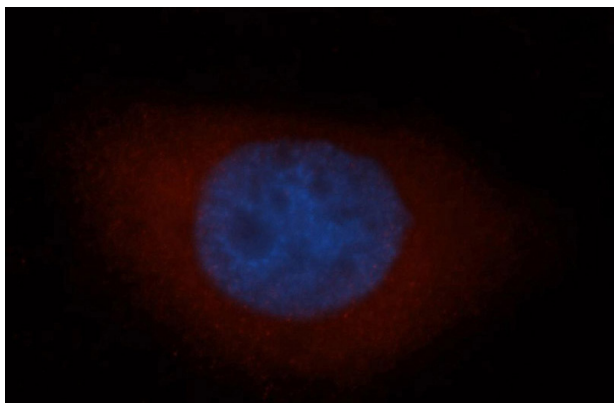
HeLa cells were subjected to SDS PAGE followed by western blot with Catalog No:108934(CAPG antibody) at dilution of 1:1000



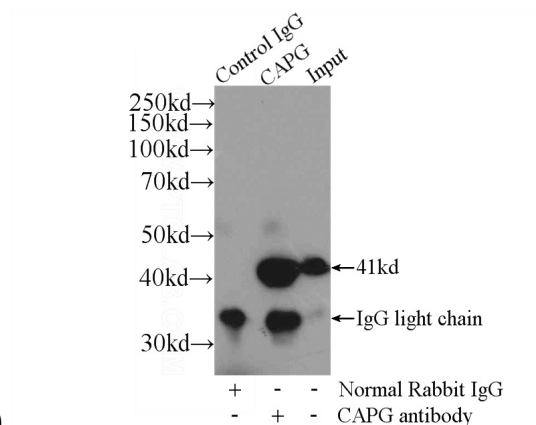
Immunohistochemical of paraffin-embedded human prostate cancer using Catalog No:108934(CAPG antibody) at dilution of 1:100 (under 10x lens)

CAPG antibody

Catalog Number: 108934



Immunofluorescent analysis of MCF-7 cells, using CAPG antibody Catalog No:108934 at 1:50 dilution and Rhodamine-labeled goat anti-rabbit IgG (red). Blue pseudocolor = DAPI (fluorescent



DNA dye).

IP Result of anti-CAPG (IP:Catalog No:108934, 4ug; Detection:Catalog No:108934 1:500) with mouse heart tissue lysate 4000ug.