

CRHBP Polyclonal Antibody



Catalog Number: 164934

Product name

CRHBP Polyclonal Antibody

Specificity

Human, Mouse, Rat

Antibody description

Polyclonal antibody to CRHBP

Preparation

Antigen: Recombinant fusion protein containing a sequence corresponding to amino acids 25-322 of human CRHBP (NP_001873.2).

Formulation

PBS with 0.02% sodium azide, 50% glycerol, pH7.3.

Storage

Store at -20°C. Avoid freeze / thaw cycles.

Clonality

Polyclonal

Ig Type

Rabbit IgG

Applications

WB, IHC, IF

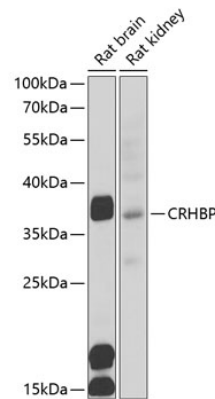
Dilutions

WB 1:500 - 1:2000

IHC 1:50 - 1:100

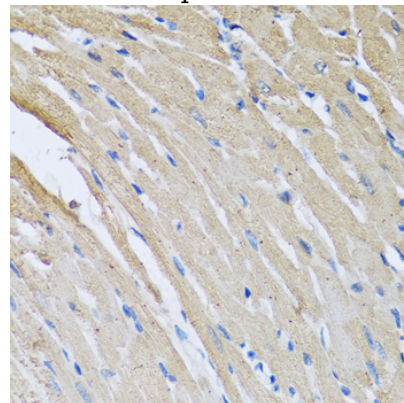
IF 1:50 - 1:100

Validations



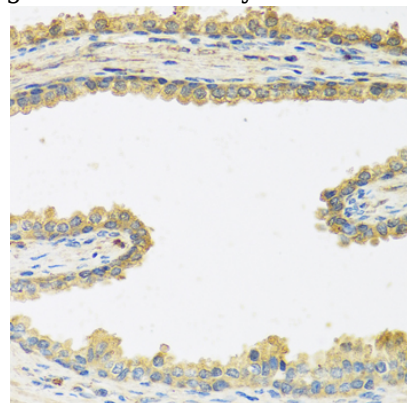
Western blot - CRHBP Polyclonal Antibody

Western blot analysis of extracts of various cell lines, using CRHBP antibody at 1:1000 dilution. Secondary antibody: HRP Goat Anti-Rabbit IgG (H+L) at 1:10000 dilution. Lysates/proteins: 25ug per lane. Blocking buffer: 3% nonfat dry milk in TBST. Detection: ECL Basic Kit. Exposure time: 90s.



Immunohistochemistry - CRHBP Polyclonal Antibody

Immunohistochemistry of paraffin-embedded rat heart using CRHBP antibody at dilution of 1:100



(40x lens).

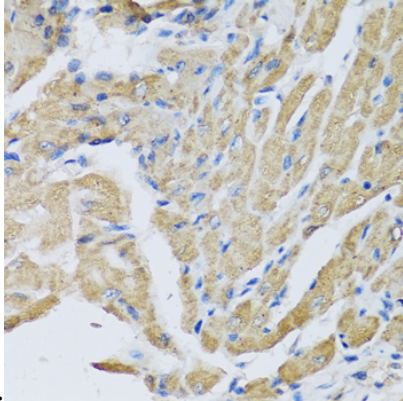
CRHBP Polyclonal Antibody



Catalog Number: 164934

Immunohistochemistry - CRHBP Polyclonal Antibody

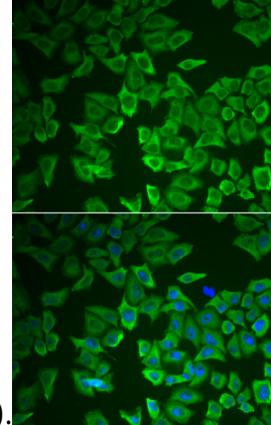
Immunohistochemistry of paraffin-embedded human prostate using CRHBP antibody at dilution



of 1:100 (40x lens).

Immunohistochemistry - CRHBP Polyclonal Antibody

Immunohistochemistry of paraffin-embedded mouse heart using CRHBP antibody at dilution of



1:100 (40x lens).

Immunofluorescence - CRHBP Polyclonal Antibody

Immunofluorescence analysis of HeLa cells using CRHBP antibody . Blue: DAPI for nuclear staining.