

Human REG1B (His Tag) recombinant protein



Catalog Number: 502934

General Information

Gene Name Synonym

Pancreatic stone protein 2; Regenerating islet-derived protein 1-beta; Regenerating protein I beta

Protein Construction

A DNA sequence encoding the human REG1B (NP_006498.1) (Met 1-Asn 166) was fused with a polyhistidine tag at the C-terminus.

Organism

Human

Expression Host

Human Cells

QC Testing

Purity

> 95 % as determined by SDS-PAGE

Endotoxin

< 1.0 EU per μg of the protein as determined by the LAL method

Stability

Samples are stable for up to twelve months from date of receipt at -70°C

Predicted N terminal

Gln 23

Molecular Mass

The recombinant human REG1B consists of 155

amino acids and predicts a molecular mass of 17.7 kDa. In SDS-PAGE under reducing conditions, the apparent molecular mass of rh REG1B is approximately 19-21 kDa due to different glycosylation.

Formulation

Lyophilized from sterile PBS, pH 7.4

1. 5 % trehalose and mannitol are added as protectants before lyophilization.

2. Please contact us for any concerns or special requirements.

Usage Guide

Storage

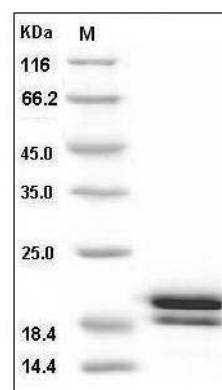
Store it under sterile conditions at -20°C to -80°C .

It is recommended that the protein be aliquoted for optimal storage. Avoid repeated freeze-thaw cycles.

Reconstitution

Adding sterile water, prepare a stock solution of 0.25 mg/ml. Concentration is measured by UV-Vis.

SDS-PAGE



Human REG1B / PSPS2 Protein (His Tag) SDS-PAGE