

# Anti-bFGF/FGF2 antibody



Catalog Number: 101934

## Product name

Anti-bFGF/FGF2 antibody

## Immunogen

[Human bFGF/FGF2 recombinant protein](#)

## Specificity

Human bFGF / FGF2

## Antibody description

Rabbit polyclonal to bFGF/FGF2

## Preparation

Produced in rabbits immunized with purified, recombinant Human bFGF / FGF2 (rhFGF2; NP\_001997.5; Pro 143-Ser 288). bFGF specific IgG was purified by human bFGF affinity chromatography.

## Formulation

0.2 µm filtered solution in PBS with 5% trehalose

## Storage

This antibody can be stored at 2°C-8°C for one month without detectable loss of activity. Antibody products are stable for twelve months from date of receipt when stored at -20°C to -80°C.

Preservative-Free.

Sodium azide is recommended to avoid contamination (final concentration 0.05%-0.1%). It is toxic to cells and should be disposed of properly. Avoid repeated freeze-thaw cycles.

## Clonality

Polyclonal

## Ig Type

Rabbit IgG

## Applications

ELISA, WB, IP

## Dilutions

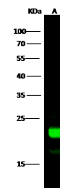
WB: 10-30 µg/mL

ELISA: 0.5-1.0 µg/mL

This antibody can be used at 0.5-1.0 µg/mL with the appropriate secondary reagents to detect Human bFGF. The detection limit for Human bFGF is 0.00245 µg/well.

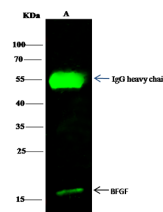
IP: 4-6 µg/mg of lysate

## Validations



Items	Lanes
Sample (Membrane: lysate)	K562
Sample Volume (µg/lane)	30
Gel	13% SDS-PAGE reducing gel
Recommended Concentration	10-30 µg/ml
Secondary Antibody	Dylight 800 Labeled Antibody to Rabbit IgG (H+L), at 1:5000 dilution.
Developed using Odyssey imaging system.	
Explanation	Predicted band size : 22 kDa Observed band size : 22 kDa Additional bands at : 17 kDa (We are unsure as to the identity of these extra bands. They are possible non-specific bindings).

bFGF / FGF2 Antibody, Rabbit PAb, Antigen Affinity Purified, Western blot



Items	Lanes
Sample (wholecell lysate)	K562
Sample quantity	0.5 µg
IP antibody quantity	2 µg
Protein G agarose	15 µl of 50% Protein G Agarose
Gel	13% SDS-PAGE reducing gel
Primary antibody	bFGF antibody at 10 µg/ml [Cat# 10014-RP02]
Secondary antibody	Dylight 800-labeled antibody to rabbit IgG (H+L) at 1:5000 dilution.

bFGF / FGF2 Antibody, Rabbit PAb, Antigen Affinity Purified