

Anti-CRIP2 antibody



Catalog Number: 106534

Product name

Anti-CRIP2 antibody

Immunogen

[Human CRIP2 \(His & GST Tag\) recombinant protein](#)

Specificity

Human CRIP2

Antibody description

Rabbit polyclonal to CRIP2

Preparation

Produced in rabbits immunized with purified, recombinant Human CRIP2 (rh CRIP2; P52943; Met1-Pro208). CRIP2 specific IgG was purified by Human CRIP2 affinity chromatography.

Formulation

0.2 μm filtered solution in PBS

Storage

This antibody can be stored at 2°C-8°C for one month without detectable loss of activity. Antibody products are stable for twelve months from date of receipt when stored at -20°C to -80°C.

Preservative-Free.

Sodium azide is recommended to avoid contamination (final concentration 0.05%-0.1%). It is toxic to cells and should be disposed of properly. Avoid repeated freeze-thaw cycles.

Clonality

Polyclonal

Ig Type

Rabbit IgG

Applications

ELISA, WB, IHC-P

Dilutions

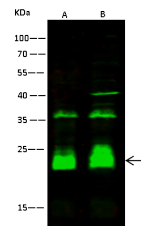
WB: 2-5 $\mu\text{g/ml}$

ELISA: 0.1-0.2 $\mu\text{g/mL}$

This antibody can be used at 0.1-0.2 $\mu\text{g/mL}$ with the appropriate secondary reagents to detect Human CRIP2. The detection limit for Human CRIP2 is 0.00245 ng/well.

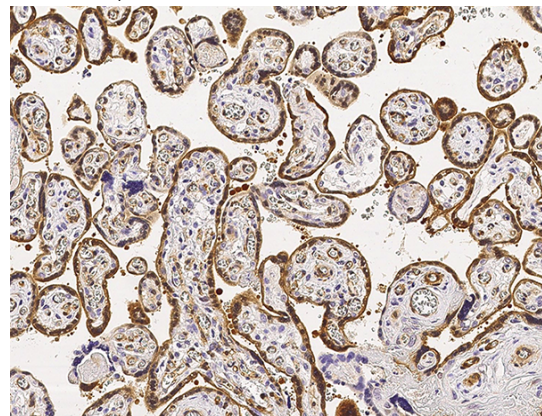
IHC-P: 0.1-2 $\mu\text{g/ml}$

Validations



Items \ Lanes	A	B
Sample (whole cell lysate)	MCF7	HeLa
Sample Volume ($\mu\text{g/lane}$)	30	
Gel	13% SDS-PAGE reducing gel	
Recommended Concentration	2.5 $\mu\text{g/ml}$	
Secondary Antibody	Dylight 800-labeled Antibody To Rabbit IgG (H+L), at 1:5000 dilution.	

CRIP2 Antibody, Rabbit PAb, Antigen Affinity Purified, Western blot



CRIP2 Antibody, Rabbit PAb, Antigen Affinity Purified, Immunohistochemistry