

# Anti-SP100 antibody



Catalog Number: 142534

## Product name

Anti-SP100 antibody

## Specificity

Human SP100

## Antibody description

Rabbit Polyclonal to Human SP100

## Preparation

Produced in rabbits immunized with a synthetic peptide corresponding to the center region of the Human SP100, and purified by antigen affinity chromatography.

## Formulation

0.2 µm filtered solution in PBS

## Storage

This antibody can be stored at 2°C-8°C for one month without detectable loss of activity. Antibody products are stable for twelve months from date of receipt when stored at -20°C to -80°C.

Preservative-Free.

Sodium azide is recommended to avoid contamination (final concentration 0.05%-0.1%). It is toxic to cells and should be disposed of

properly. Avoid repeated freeze-thaw cycles.

## Clonality

Polyclonal

## Ig Type

Rabbit IgG

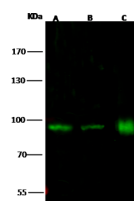
## Applications

WB

## Dilutions

WB: 5-20 µg/ml

## Validations



Lanes	A	B	C
Items			
Sample (whole cell lysate)	Hela	MCF7	HepG2
Sample Volume (µg/lane)	30	30	30
Gel	7.5% SDS-PAGE reducing gel		
Recommended Concentration	5-20 µg/ml		
Secondary Antibody	DyLight 800-labeled Antibody to Rabbit IgG (H+L), at 1:5000 dilution.		
	Developed using Odyssey imaging system.		
Explanation	Predicted band size : 100 kDa Observed band size : 95 kDa		

SP100 Antibody, Rabbit PAb, Antigen Affinity Purified, Western blot