

# Anti-Phospho-Chk1 (Ser280) Rabbit antibody



Catalog Number: 167134

## Product name

Polyclonal

Anti-Phospho-Chk1 (Ser280) Rabbit antibody

## Ig Type

## Specificity

Rabbit IgG

Human

## Applications

## Antibody description

WB

Phospho-Chk1 (Ser280) Rabbit polyclonal antibody

## Dilutions

WB:1/500-1/1000

## Preparation

Antigen: Peptide sequence around phosphorylation site of serine 280 (V-T-S(p)-G-G) derived from Human Chk1.

## Validations

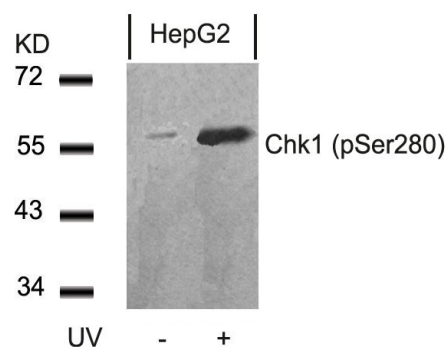
## Formulation

Supplied at 1.0mg/mL in phosphate buffered saline (without Mg<sup>2+</sup> and Ca<sup>2+</sup>), pH 7.4, 150mM NaCl, 0.02% sodium azide and 50% glycerol.

## Storage

Store at 4°C short term. Store at -20°C long term. Avoid freeze / thaw cycle.

## Clonality



Western blot analysis of extracts from HepG2 cells untreated or treated with UV using Chk1 (Phospho-Ser280) Antibody .