

# Anti-SETD7/SET7/9 antibody



Catalog Number: 106134

## Product name

Anti-SETD7/SET7/9 antibody

## Immunogen

[Human SETD7/SET7/9 \(His Tag\) recombinant protein](#)

## Specificity

Human SETD7 / SET7 / 9

## Antibody description

Rabbit polyclonal to SETD7/SET7/9

## Preparation

Produced in rabbits immunized with purified, recombinant Human SETD7 / SET7 / 9 (rh SETD7 / SET7 / 9; NP\_085151.1; Asp2-Lys366). SETD7 / SET7 / 9 specific IgG was purified by Human SETD7 / SET7 / 9 affinity chromatography.

## Formulation

0.2 µm filtered solution in PBS

## Storage

This antibody can be stored at 2°C-8°C for one month without detectable loss of activity. Antibody products are stable for twelve months from date of receipt when stored at -20°C to -80°C.

Preservative-Free.

Sodium azide is recommended to avoid contamination (final concentration 0.05%-0.1%). It is toxic to cells and should be disposed of properly. Avoid repeated freeze-thaw cycles.

## Clonality

Polyclonal

## Ig Type

Rabbit IgG

## Applications

ELISA, WB, IP

## Dilutions

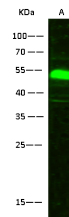
WB: 2-5 µg/ml

ELISA:0.1-0.2 µg/mL

This antibody can be used at 0.1-0.2 µg/mL with the appropriate secondary reagents to detect Human SETD7 / SET7 / 9. The detection limit for Human SETD7 / SET7 / 9 is 0.00975 ng/well.

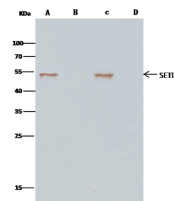
IP: 1-4 µg/mg of lysate

## Validations



Items	Lanes	A
Sample (whole cell lysate)		Jurkat
Sample Volume (µl/lane)		30
Gel		13% SDS-PAGE reducing gel
Recommended Concentration		2-5 µg/ml
Secondary Antibody		Dylight 800-labeled Antibody To Rabbit IgG (H+L) at 1:5000 dilution.

## SETD7 / SET7 / 9 Antibody, Rabbit PAb, Antigen Affinity Purified, Western blot



Items	Lanes	A	B	C	D
Sample (whole cell lysate)		Jurkat			MCF-7
Sample quantity			0.5 mg		
IP antibody type		SETD7-AP02	Rabbit blank IgG	SETD7-AP02	Rabbit blank IgG
IP antibody quantity			2 µg		
Protein G agarose			15 µl of 50% Protein G Agarose		
Gel			13% SDS-PAGE reducing gel		
Primary antibody			SETD7 antibody at 5 µg/ml		
Secondary antibody			Clean-Block IP Detection Reagent (HRP) at 1:1000 dilution.		

## SETD7 / SET7 / 9 Antibody, Rabbit PAb, Antigen Affinity Purified, Immunoprecipitation