

# ATG13 Polyclonal Antibody



Catalog Number: 160134

## Product name

ATG13 Polyclonal Antibody

## Specificity

Human, Mouse, Rat

## Antibody description

Polyclonal antibody to ATG13

## Preparation

Antigen: Recombinant fusion protein containing a sequence corresponding to amino acids 281-480 of human ATG13 (NP\_055556.2).

## Formulation

PBS with 0.02% sodium azide, 50% glycerol, pH7.3.

## Storage

Store at -20°C. Avoid freeze / thaw cycles.

## Clonality

Polyclonal

## Ig Type

Rabbit IgG

## Applications

WB, IHC, IF

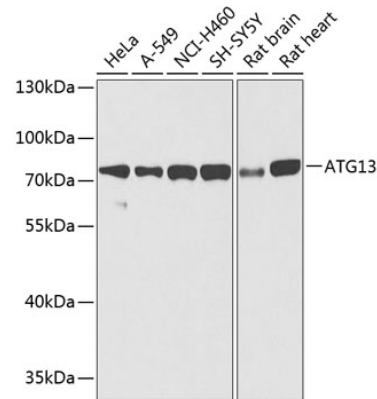
## Dilutions

WB 1:500 - 1:2000

IHC 1:50 - 1:200

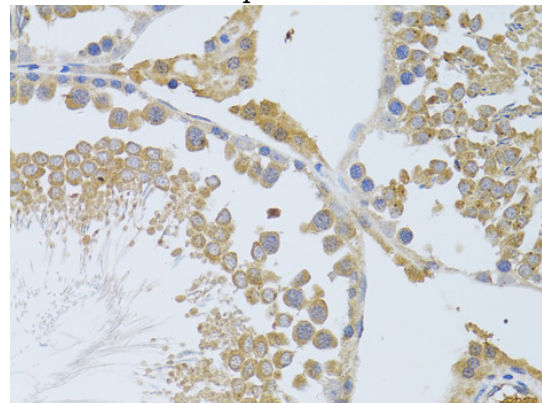
IF 1:50 - 1:200

## Validations



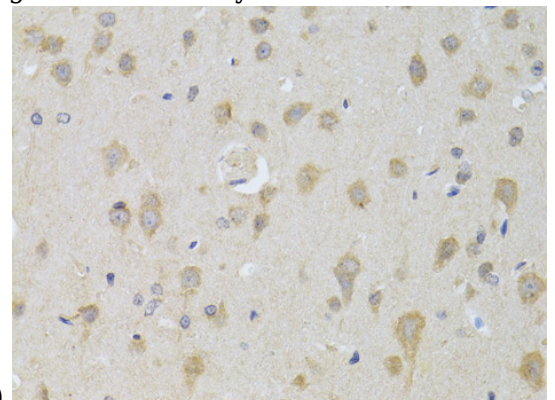
Western blot - ATG13 Polyclonal Antibody

Western blot analysis of extracts of various cell lines, using ATG13 antibody at 1:1000 dilution. Secondary antibody: HRP Goat Anti-Rabbit IgG (H+L) at 1:10000 dilution. Lysates/proteins: 25ug per lane. Blocking buffer: 3% nonfat dry milk in TBST. Detection: ECL Enhanced Kit. Exposure time: 10s.



Immunohistochemistry - ATG13 Polyclonal Antibody

Immunohistochemistry of paraffin-embedded rat testis using ATG13 antibody at dilution of 1:100



(40x lens).

# ATG13 Polyclonal Antibody

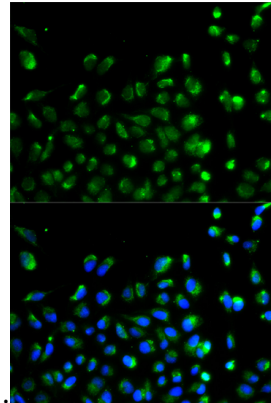


Catalog Number: 160134

---

Immunohistochemistry - ATG13 Polyclonal Antibody

Immunohistochemistry of paraffin-embedded rat brain using ATG13 antibody at dilution of 1:100



(40x lens).

Immunofluorescence - ATG13 Polyclonal Antibody

Immunofluorescence analysis of A549 cells using ATG13 antibody . Blue: DAPI for nuclear staining.