

# RPS21 antibody



Catalog Number: 114834

## Product name

RPS21 antibody

## Specificity

human, mouse, rat; other species not tested.

## Antibody description

RPS21 Rabbit Polyclonal antibody. Positive IF detected in HepG2. Positive WB detected in HepG2 cells, SGC-7901 cells. Observed molecular weight by Western-blot: 9kd

## Preparation

This antibody was obtained by immunization of RPS21 recombinant protein (Accession Number: BC018140). Purification method: Antigen affinity purified.

## Formulation

PBS with 0.02% sodium azide and 50% glycerol pH 7.3.

## Storage

Store at -20°C. DO NOT ALIQUOT

## Clonality

Polyclonal

## Ig Type

Rabbit IgG

## Applications

ELISA, WB, IF

## Dilutions

Recommended Dilution:

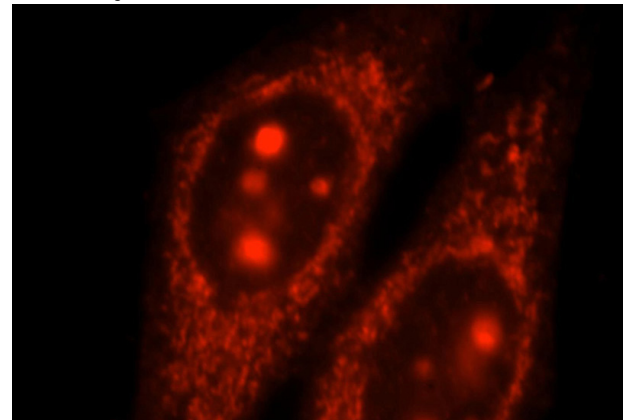
WB: 1:200-1:2000

IF: 1:10-1:100

## Validations



HepG2 cells were subjected to SDS PAGE followed by western blot with Catalog No:114834(RPS21 antibody) at dilution of 1:200



Immunofluorescent analysis of HepG2 cells, using RPS21 antibody Catalog No:114834 at 1:25 dilution and Rhodamine-labeled goat anti-rabbit IgG (red).