

# Anti-Ephrin-B1/EFNB1 antibody



Catalog Number: 100834

## Product name

Anti-Ephrin-B1/EFNB1 antibody

## Immunogen

[Rat Ephrin-B1/EFNB1 \(His Tag\) recombinant protein](#)

## Specificity

Rat Ephrin-B1 / EFNB1

## Antibody description

Rabbit polyclonal to Ephrin-B1/EFNB1

## Preparation

Produced in rabbits immunized with purified, recombinant Rat Ephrin-B1 / EFNB1 (rh Ephrin-B1 / EFNB1; P52796; Met1-Thr229). Ephrin-B1 / EFNB1 specific IgG was purified by Rat Ephrin-B1 / EFNB1 affinity chromatography.

## Formulation

0.2 µm filtered solution in PBS

## Storage

This antibody can be stored at 2°C-8°C for one month without detectable loss of activity. Antibody products are stable for twelve months from date of receipt when stored at -20°C to -80°C.

Preservative-Free.

Sodium azide is recommended to avoid contamination (final concentration 0.05%-0.1%). It is toxic to cells and should be disposed of properly. Avoid repeated freeze-thaw cycles.

## Clonality

Polyclonal

## Ig Type

Rabbit IgG

## Applications

ELISA, WB, IP

## Dilutions

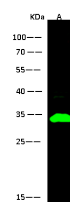
WB: 2-10 µg/ml

ELISA: 0.1-0.2 µg/mL

This antibody can be used at 0.1-0.2 µg/mL with the appropriate secondary reagents to detect Rat Ephrin-B1 / EFNB1. The detection limit for Rat Ephrin-B1 / EFNB1 is < 0.039 ng/well.

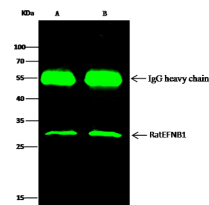
IP: 1-4 µg/mg of lysate

## Validations



Lanes	A
Sample (Tissue lysate)	mouse brain
Sample Volume (µg/lane)	30
Gel	13% SDS-PAGE reducing gel
Recommended Concentration	2-10 µg/ml
Secondary Antibody	Dylight 800-labeled Antibody to Rabbit IgG (H+L), at 1:5000 dilution
Developed using Odyssey imaging system	
Explanation	Predicted band size: 38 kDa Observed band size: 34 kDa

Ephrin-B1 / EFNB1 Antibody, Rabbit PAb, Antigen Affinity Purified, Western blot



Lanes	A	B
Sample (whole cell lysate)	HeLa	HepG2
Sample quantity	0.5 mg	
IP antibody quantity	2 µg	
Protein G agarose	15 µl of 50% Protein G Agarose	
Gel	13% SDS-PAGE reducing gel	
Primary antibody	Rat EFNB1 antibody at 2 µg/ml	
Secondary antibody	Dylight 800-labeled antibody to rabbit IgG (H+L), at 1:5000 dilution	

Ephrin-B1 / EFNB1 Antibody, Rabbit PAb, Antigen Affinity Purified, Immunoprecipitation