

Anti-KDM1/LSD1 Rabbit antibody



Catalog Number: 167434

Product name

Anti-KDM1/LSD1 Rabbit antibody

WB: 1/1000-1/2000

IHC: 1/50-1/200

Specificity

Human, Mouse, Rat

ICC/IF: 1/50-1/200

IP: 1/30

Antibody description

KDM1/LSD1 Rabbit polyclonal antibody

Validations

Preparation

Antigen: A synthesized peptide derived from human KDM1 / LSD1

Formulation

Rabbit IgG in phosphate buffered saline , pH 7.4, 150mM NaCl, 0.02% sodium azide and 50% glycerol.

Storage

Store at 4°C short term. Store at -20°C long term. Avoid freeze / thaw cycle.

Clonality

Polyclonal

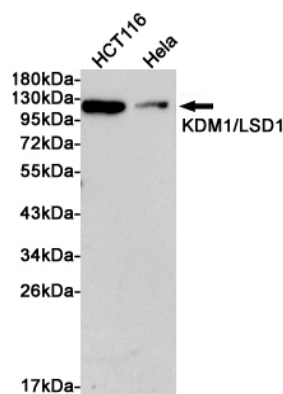
Ig Type

Rabbit IgG

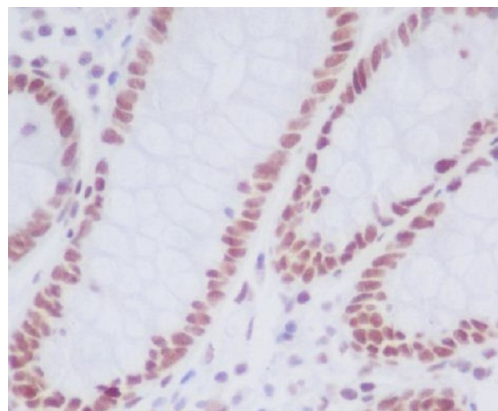
Applications

WB, IHC-P, ICC/IF, IP

Dilutions



Western blot analysis of extracts from HCT116 and HeLa cells using KDM1/LSD1 Rabbit pAb at 1:1000 dilution. Predicted band size: 92kDa. Observed band size: 110kDa.



Immunohistochemical analysis of paraffin-embedded human colon, using KDM1/LSD1 Antibody.