

# Anti-WDR83 antibody

Catalog Number: 176434

## Product name

Anti-WDR83 antibody

## Specificity

Human, Mouse, Rat

## Antibody description

Rabbit polyclonal antibody to WDR83

## Preparation

This antigen of this antibody was the antiserum was produced against synthesized peptide derived from the internal region of human wdr83. aa range:141-190

## Formulation

Liquid, Liquid in PBS containing 50% glycerol, 0.5% BSA and 0.02% sodium azide.

## Storage

Store at +4°C after thawing. Aliquot store at -20°C or -80°C. Avoid repeated freeze / thaw cycles.

## Clonality

Polyclonal

## Ig Type

Rabbit IgG

## Applications

WB, IHC-P

## Dilutions

WB: 1:500-1:2000

IHC-P: 1:100-1:300

## Validations

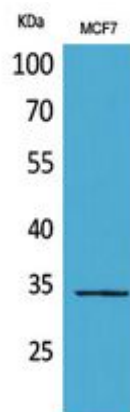


Fig1:: Western Blot analysis of MCF7 cells using MAPK Organizer 1 Polyclonal Antibody.. Secondary antibody (catalog#: HA1001) was diluted at 1:20000

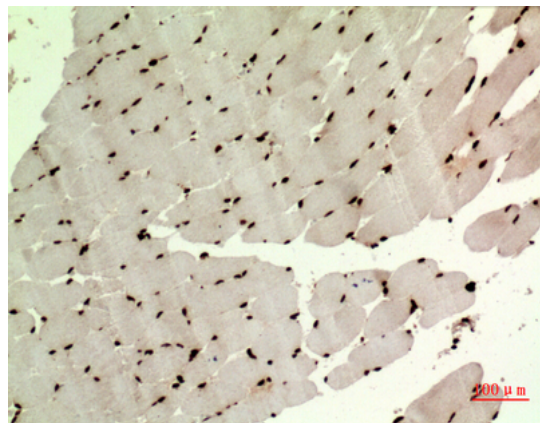


Fig2:: Immunohistochemical analysis of paraffin-embedded human-muscle, antibody was diluted at 1:100