

EGLN1/EGLN2 Polyclonal Antibody



Catalog Number: 160434

Product name

EGLN1/EGLN2 Polyclonal Antibody

Specificity

Human, Mouse, Rat

Antibody description

Polyclonal antibody to EGLN1/EGLN2

Preparation

Antigen: A synthetic peptide of human EGLN1/EGLN2

Formulation

PBS with 0.02% sodium azide, 50% glycerol, pH7.3.

Storage

Store at -20°C. Avoid freeze / thaw cycles.

Clonality

Polyclonal

Ig Type

Rabbit IgG

Applications

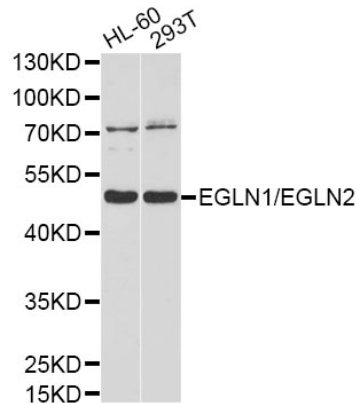
WB, IHC

Dilutions

WB 1:500 - 1:2000

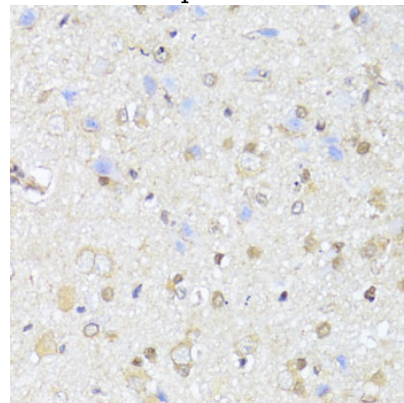
IHC 1:50 - 1:200

Validations



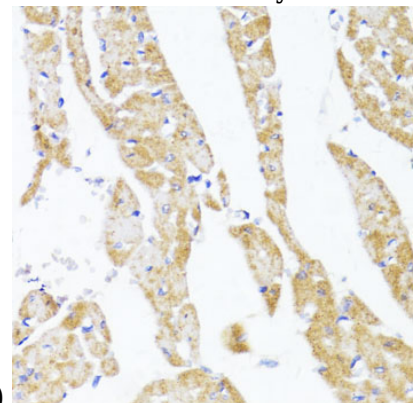
Western blot - EGLN1/EGLN2 Polyclonal Antibody

Western blot analysis of extracts of various cell lines, using EGLN1/EGLN2 antibody at 1:1000 dilution. Secondary antibody: HRP Goat Anti-Rabbit IgG (H+L) at 1:10000 dilution. Lysates/proteins: 25ug per lane. Blocking buffer: 3% nonfat dry milk in TBST. Detection: ECL Basic Kit. Exposure time: 90s.



Immunohistochemistry - EGLN1/EGLN2 Polyclonal Antibody

Immunohistochemistry of paraffin-embedded rat brain using EGLN1+EGLN2 antibody at dilution of



1:100 (40x lens).

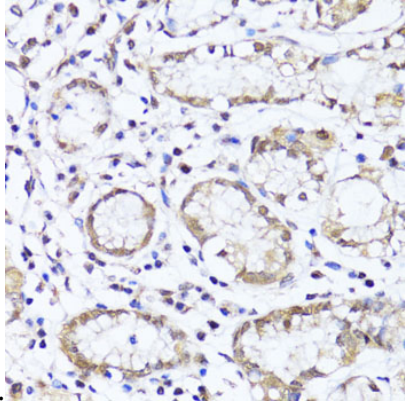
EGLN1/EGLN2 Polyclonal Antibody



Catalog Number: 160434

Immunohistochemistry - EGLN1/EGLN2 Polyclonal Antibody

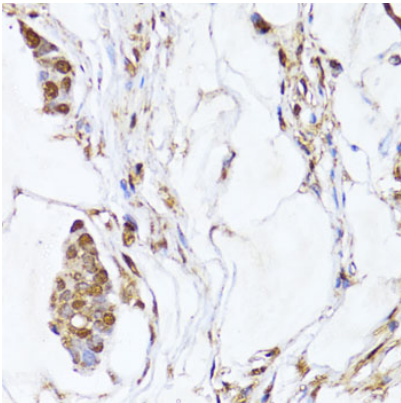
Immunohistochemistry of paraffin-embedded rat heart using EGLN1+EGLN2 antibody at dilution of



1:100 (40x lens).

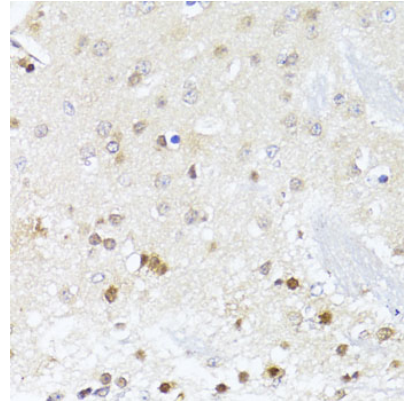
Immunohistochemistry - EGLN1/EGLN2 Polyclonal Antibody

Immunohistochemistry of paraffin-embedded human stomach using EGLN1+EGLN2 antibody at dilution of 1:100 (40x lens).



Immunohistochemistry - EGLN1/EGLN2 Polyclonal Antibody

Immunohistochemistry of paraffin-embedded human gastric cancer using EGLN1+EGLN2 antibody at dilution of 1:100 (40x lens).



Immunohistochemistry - EGLN1/EGLN2 Polyclonal Antibody

Immunohistochemistry of paraffin-embedded mouse brain using EGLN1+EGLN2 antibody at dilution of 1:100 (40x lens).