

CD39 antibody



Catalog Number: 109034

Product name

CD39 antibody

Specificity

Human, Mouse, Rat; other species not tested.

Antibody description

CD39 Rabbit Polyclonal antibody. Positive IHC detected in human placenta tissue, human liver tissue, human tonsillitis tissue. Positive FC detected in Jurkat cells. Positive IP detected in mouse liver tissue. Positive WB detected in Jurkat cells, HL-60 cells, human liver tissue, mouse brain tissue, mouse liver tissue. Observed molecular weight by Western-blot: 75-95 kDa

Preparation

This antibody was obtained by immunization of CD39 recombinant protein (Accession Number: NM_001164183). Purification method: Antigen affinity purified.

Formulation

PBS with 0.02% sodium azide and 50% glycerol pH 7.3.

Storage

Store at -20°C. DO NOT ALIQUOT

Clonality

Polyclonal

Ig Type

Rabbit IgG

Applications

ELISA, WB, IHC, FC, IP

Dilutions

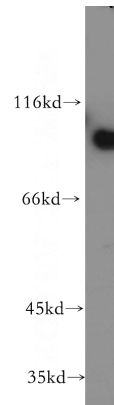
Recommended Dilution:

WB: 1:500-1:5000

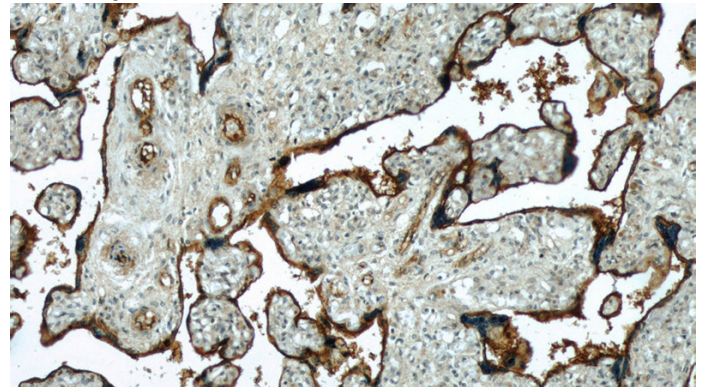
IP: 1:200-1:2000

IHC: 1:20-1:200

Validations



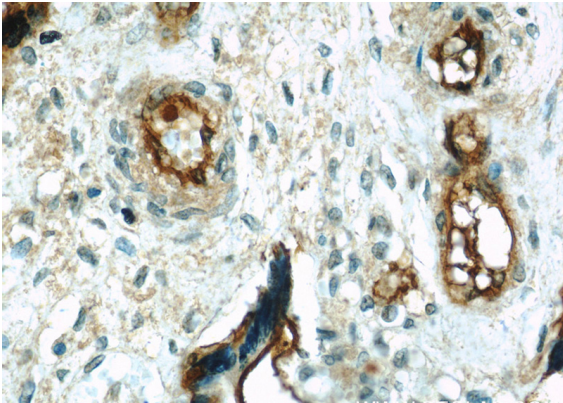
Jurkat cells were subjected to SDS PAGE followed by western blot with Catalog No:109034(ENTPD1 antibody) at dilution of 1:500



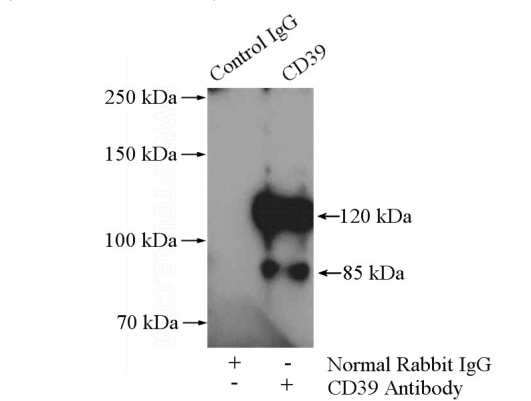
Immunohistochemical of paraffin-embedded human placenta using Catalog No:109034(ENTPD1 antibody) at dilution of 1:50 (under 10x lens)

CD39 antibody

Catalog Number: 109034

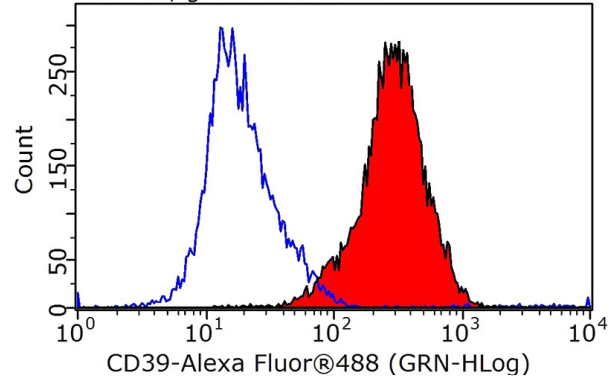


Immunohistochemical of paraffin-embedded human placenta using Catalog No:109034(ENTPD1 antibody) at dilution of 1:50 (under 40x lens)



IP Result of anti-ENTPD1 (IP:Catalog No:109034, 4ug; Detection:Catalog No:109034 1:800) with mouse liver tissue lysate 4000ug.

Plot P03, gated on P01.R1



1X10⁶ Jurkat cells were stained with 0.5ug ENTPD1 antibody (Catalog No:109034, red) and control antibody (blue). Fixed with 90% MeOH blocked with 3% BSA (30 min). Alexa Fluor 488-conjugated AffiniPure Goat Anti-Rabbit IgG(H+L) with dilution 1:1000.