

Anti-PSMA Rabbit antibody



Catalog Number: 169034

Product name

Anti-PSMA Rabbit antibody

Specificity

Human

Antibody description

PSMA Rabbit monoclonal antibody

Preparation

Antigen: A synthetic peptide of human PSMA

Formulation

Supplied in 50nM Tris-Glycine(pH 7.4), 0.15M NaCl, 40%Glycerol, 0.01% sodium azide and 0.05% BSA.

Storage

Store at 4°C short term. Aliquot and store at -20°C long term. Avoid freeze / thaw cycle.

Clonality

Monoclonal

Ig Type

Rabbit IgG

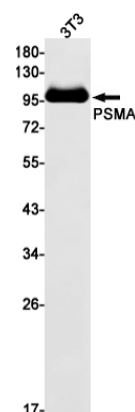
Applications

WB

Dilutions

1:1000

Validations



Western blot detection of PSMA in 3T3 cell lysates using PSMA Rabbit mAb(1:1000 diluted).Predicted band size:84kDa.Observed band size:100kDa.