

Amatuximab reference antibody



Catalog Number: 177034

Product name

Amatuximab reference antibody

Specificity

Human Mesothelin

Antibody description

Anti-Mesothelin Antibody (Amatuximab)

Preparation

Recombinant expression and purified from CHO cells.

Formulation

0.1 M Pro-Ac, 20 mM Arg, pH 5.0

Storage

-80°C for 2 years under sterile conditions; -20°C for 1 year under sterile conditions; Avoid repeated freeze-thaw cycles.

Clonality

Monoclonal

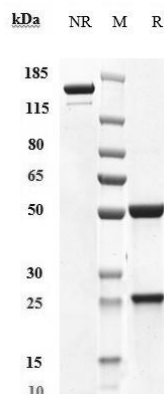
Ig Type

IgG1

Applications

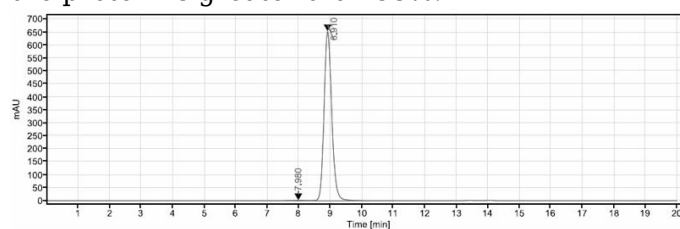
ELISA

Validations



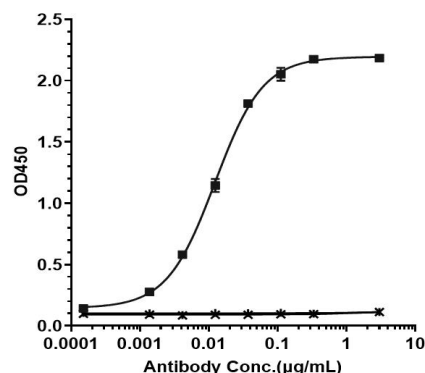
SDS-PAGE

Anti-Mesothelin Antibody (amatuximab) on SDS-PAGE under reducing (R) condition. The purity of the protein is greater than 95%.



SEC-HPLC

The purity of Anti-Mesothelin Antibody (amatuximab) is 99.47%, determined by SEC-



HPLC.

Bioactivity: ELISA

Immobilized human Mesothelin His at 2 µg/mL can bind Anti-Mesothelin Antibody (amatuximab), EC50=0.01226 µg/mL.