

Mouse GM-CSF / CSF2 (Fc Tag) recombinant protein



Catalog Number: 504034

General Information

Gene Name Synonym

Colony-stimulating factor

Protein Construction

A DNA sequence encoding the mouse CSF2 (P01587) (Ala18-Lys141) was expressed with the fused Fc region of human IgG1 at the N-terminus.

Organism

Mouse

Expression Host

Human Cells

QC Testing

Activity

Measured in a cell proliferation assay using FDC-P1 cells.
The ED₅₀ for this effect is typically 0.02-0.1 ng/mL.

Purity

> 95 % as determined by SDS-PAGE

Endotoxin

< 1.0 EU per µg of the protein as determined by the LAL method

Stability

Samples are stable for up to twelve months from date of receipt at -70°C

Predicted N terminal

Glu

Molecular Mass

The recombinant mouse CSF2/Fc comprises 384 amino acids and has a predicted molecular mass of 42.5 kDa. The apparent molecular mass of the protein is approximately 44-52 kDa in SDS-PAGE under reducing conditions due to glycosylation.

Formulation

Lyophilized from sterile PBS, PH 7.4.
1. 5 % trehalose and mannitol are added as protectants before lyophilization.
2. Please contact us for any concerns or special requirements.

Usage Guide

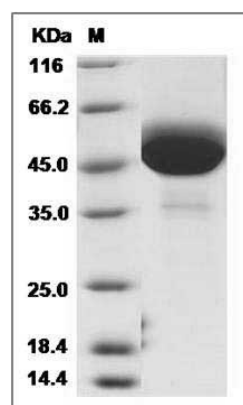
Storage

Store it under sterile conditions at -20°C to -80°C. It is recommended that the protein be aliquoted for optimal storage. Avoid repeated freeze-thaw cycles.

Reconstitution

Adding sterile water, prepare a stock solution of 0.25 mg/ml. Concentration is measured by UV-Vis.

SDS-PAGE



Mouse GM-CSF / CSF2 Protein (Fc Tag) SDS-PAGE