

Anti-MCP-3/CCL7 antibody



Catalog Number: 104034

Product name

Anti-MCP-3/CCL7 antibody

Immunogen

[Human MCP-3/CCL7 \(His Tag\) recombinant protein](#)

Specificity

Human CCL7 / MCP3

No cross-reactivity in ELISA with E.coli cell lysate

Antibody description

Mouse monoclonal to MCP-3/CCL7

Preparation

This antibody was produced from a hybridoma resulting from the fusion of a mouse myeloma with B cells obtained from a mouse immunized with purified, recombinant Human CCL7 / MCP3 (rh CCL7 / MCP3; NP_006264.2; Gln 24-Leu 99). The IgG fraction of the cell culture supernatant was purified by Protein A affinity chromatography.

Formulation

0.2 µm filtered solution in PBS with 5% trehalose

Storage

This antibody can be stored at 2°C-8°C for one month without detectable loss of activity. Antibody products are stable for twelve months from date of receipt when stored at -20°C to -80°C. Preservative-Free.

Sodium azide is recommended to avoid contamination (final concentration 0.05%-0.1%). It is toxic to cells and should be disposed of properly. Avoid repeated freeze-thaw cycles.

Clonality

Monoclonal

Ig Type

Mouse IgG1

Applications

ELISA, IF, ICC/IF

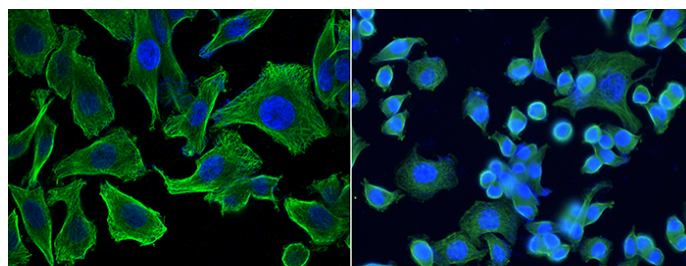
Dilutions

ELISA: 0.5-1 µg/mL

This antibody can be used at 0.5-1 µg/mL with the appropriate secondary reagents to detect Human CCL7. The detection limit for Human CCL7 is approximately 0.0195 ng/well.

ICC/IF: 10-25 µg/mL

Validations



MCP-3 / CCL7 Antibody, Mouse MAb, Immunofluorescence

Immunofluorescence staining of Human CCL7 in SKBR3 cells. Cells were fixed with 4% PFA, permeabilized with 1% Triton X-100 in PBS, blocked with 10% serum, and incubated with Mouse anti-Human CCL7 monoclonal antibody (15 µg/ml). Then cells were stained with the Alexa Fluor® 488-conjugated Goat Anti-mouse IgG secondary antibody (left panel, captured by laser confocal scanning microscope; right panel, captured by fluorescence microscope), counterstained with DAPI (blue). Positive staining was localized to cytoplasm.