

GLRX antibody



Catalog Number: 111034

Product name

GLRX antibody

Specificity

Human, Mouse, Rat; other species not tested.

Antibody description

GLRX Rabbit Polyclonal antibody. Positive WB detected in mouse lung tissue. Positive IF detected in HepG2 cells. Observed molecular weight by Western-blot: 12kd

Preparation

This antibody was obtained by immunization of GLRX recombinant protein (Accession Number: NM_001118890). Purification method: Antigen affinity purified.

Formulation

PBS with 0.1% sodium azide and 50% glycerol pH 7.3.

Storage

Store at -20°C. DO NOT ALIQUOT

Clonality

Polyclonal

Ig Type

Rabbit IgG

Applications

ELISA, WB, IF

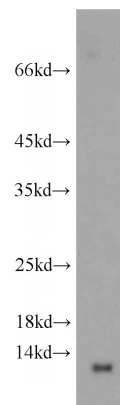
Dilutions

Recommended Dilution:

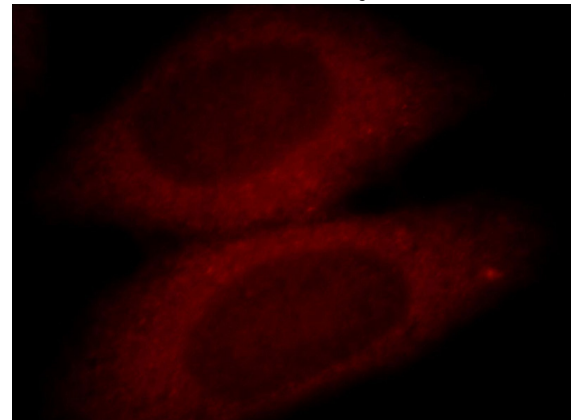
WB: 1:200-1:2000

IF: 1:10-1:100

Validations



mouse lung tissue were subjected to SDS PAGE followed by western blot with Catalog No:111034(GLRX antibody) at dilution of 1:300



Immunofluorescent analysis of HepG2 cells, using GLRX antibody Catalog No:111034 at 1:25 dilution and Rhodamine-labeled goat anti-rabbit IgG (red).