

Anti-HER2/ErbB2 antibody



Catalog Number: 105724

Product name

Anti-HER2/ErbB2 antibody

Specificity

Human ERBB2

Antibody description

Rabbit polyclonal to HER2/ErbB2

Preparation

Produced in rabbits immunized with A synthetic peptide corresponding to the center region of the human ERBB2 , and purified by antigen affinity chromatography.

Formulation

0.2 µm filtered solution in PBS

Storage

This antibody can be stored at 2°C-8°C for one month without detectable loss of activity. Antibody products are stable for twelve months from date of receipt when stored at -20°C to -80°C.

Preservative-Free.

Sodium azide is recommended to avoid contamination (final concentration 0.05%-0.1%). It is toxic to cells and should be disposed of

properly. Avoid repeated freeze-thaw cycles.

Clonality

Polyclonal

Ig Type

Rabbit IgG

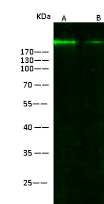
Applications

WB

Dilutions

WB: 10-15 µg/mL

Validations



| Lanes | A | B |
|---|---|--------|
| Items | | |
| Sample [whole cell lysate] | SKBR3 | HEK293 |
| Sample volume (µg/lane) | 30 | 30 |
| Gel | 13% SDS-PAGE reducing gel | |
| Recommended concentration | 10-15 µg/ml | |
| Secondary Antibody | Dylight 800-labeled Antibody To Rabbit IgG (H+L), at 1:5000 dilution. | |
| Developed using Odyssey imaging system. | | |
| Explanation | Predicted band size : 138 kDa Observed band size : 200 kDa | |

ERBB2 Antibody, Rabbit PAb, Antigen Affinity Purified, Western blot