

# RMP antibody



Catalog Number: 114724

## Product name

RMP antibody

WB: 1:200-1:2000

IP: 1:200-1:2000

## Specificity

Human; other species not tested.

IHC: 1:20-1:200

## Antibody description

RMP Rabbit Polyclonal antibody. Positive IP detected in HeLa cells. Positive WB detected in A549 cells, HEK-293 cells, HeLa cells, HepG2 cells, Jurkat cells. Positive IHC detected in human lymphoma tissue, human liver cancer tissue. Observed molecular weight by Western-blot: 70-80 kDa

## Preparation

This antibody was obtained by immunization of RMP recombinant protein (Accession Number: BC026184). Purification method: Antigen affinity purified.

## Formulation

PBS with 0.02% sodium azide and 50% glycerol pH 7.3.

## Storage

Store at -20°C. DO NOT ALIQUOT

## Clonality

Polyclonal

## Ig Type

Rabbit IgG

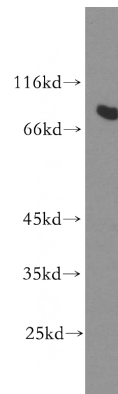
## Applications

ELISA, IHC, WB, IP

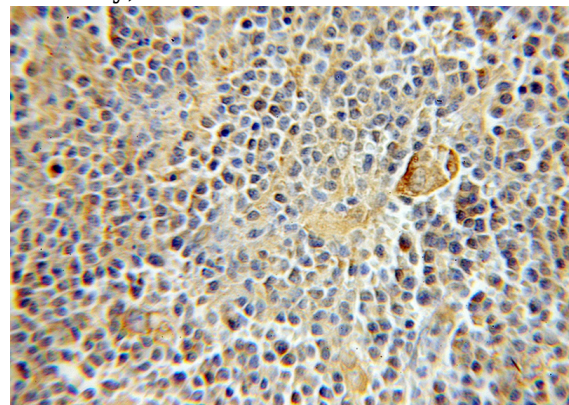
## Dilutions

Recommended Dilution:

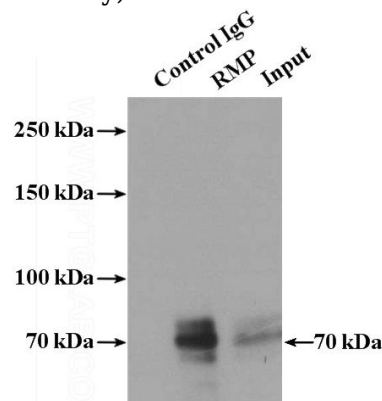
## Validations



A549 cells were subjected to SDS PAGE followed by western blot with Catalog No:114724(RMP antibody) at dilution of 1:500



Immunohistochemical of paraffin-embedded human lymphoma using Catalog No:114724(RMP antibody) at dilution of 1:50 (under 10x lens)



# RMP antibody



Catalog Number: 114724

---

IP Result of anti-RMP (IP:Catalog No:114724, 4ug; Detection:Catalog No:114724 1:500) with HeLa cells lysate 1600ug.