

# humanin antibody



Catalog Number: 111724

## Product name

humanin antibody

## Specificity

Human; other species not tested.

## Antibody description

humanin Rabbit Polyclonal antibody. Positive FC detected in SH-SY5Y cells. Positive IHC detected in human colon tissue, human heart tissue, human small intestine tissue.

## Preparation

This antibody was obtained by immunization of Peptide (Accession Number: NC\_012920). Purification method: Antigen affinity purified.

## Formulation

PBS with 0.1% sodium azide and 50% glycerol pH 7.3.

## Storage

Store at -20°C. DO NOT ALIQUOT

## Clonality

Polyclonal

## Ig Type

Rabbit IgG

## Applications

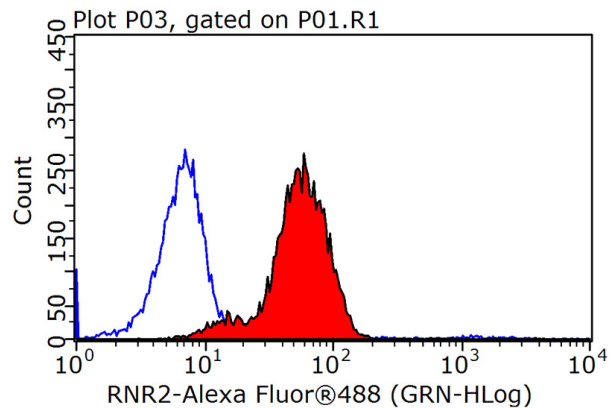
ELISA, IHC, FC

## Dilutions

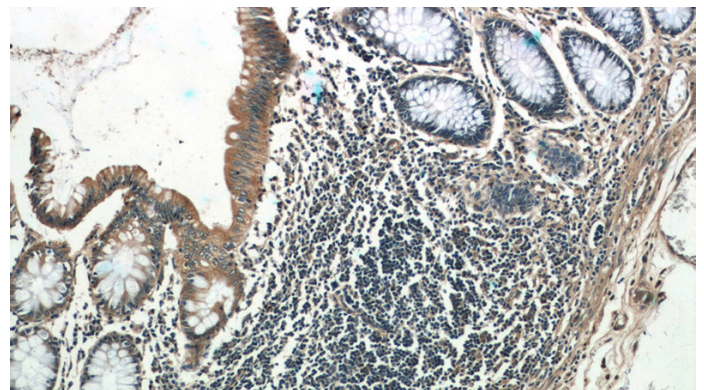
Recommended Dilution:

IHC: 1:20-1:200

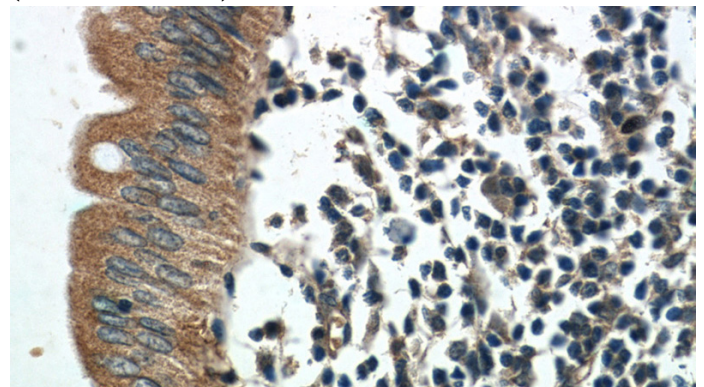
## Validations



1X10<sup>6</sup> SH-SY5Y cells were stained with 0.2ug humanin antibody (Catalog No:111724, red) and control antibody (blue). Fixed with 90% MeOH blocked with 3% BSA (30 min). Alexa Fluor 488-conjugated AffiniPure Goat Anti-Rabbit IgG(H+L) with dilution 1:1000.



Immunohistochemistry of paraffin-embedded human colon tissue slide using Catalog No:111724(humanin Antibody) at dilution of 1:50 (under 10x lens)

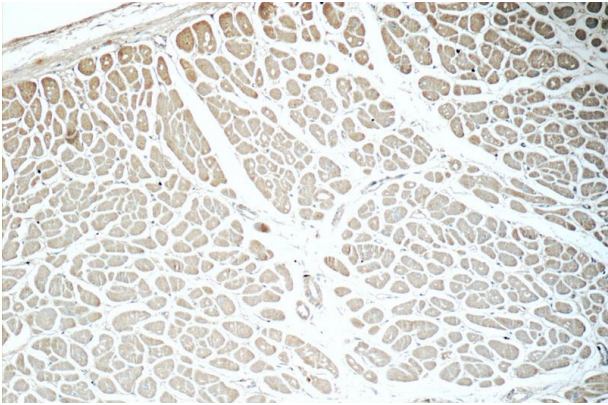


Immunohistochemistry of paraffin-embedded human colon tissue slide using Catalog No:111724(humanin Antibody) at dilution of 1:50 (under 40x lens)

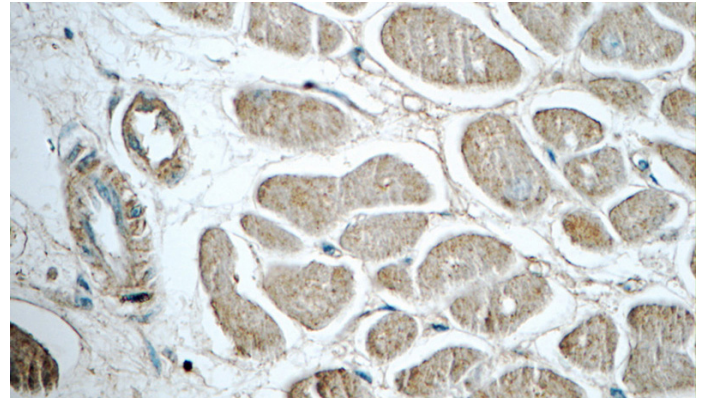
# humanin antibody

Catalog Number: 111724

---



Immunohistochemistry of paraffin-embedded human heart tissue slide using Catalog No:111724(humanin Antibody) at dilution of 1:50 (under 10x lens)



Immunohistochemistry of paraffin-embedded human heart tissue slide using Catalog No:111724(humanin Antibody) at dilution of 1:50 (under 40x lens)