

# Anti-p38 Rabbit antibody



Catalog Number: 168624

## Product name

Anti-p38 Rabbit antibody

## Specificity

Human, Mouse, Rat

## Antibody description

p38 Rabbit monoclonal antibody

## Preparation

Antigen: A synthetic peptide of human p38

## Formulation

50nM Tris-Glycine(pH 7.4), 0.15M NaCl, 40%Glycerol, 0.01% sodium azide and 0.05% BSA.

## Storage

Store at 4°C short term. Store at -20°C long term. Avoid freeze / thaw cycle.

## Clonality

Monoclonal

## Ig Type

Rabbit IgG

## Applications

WB, IHC-P, ICC/IF

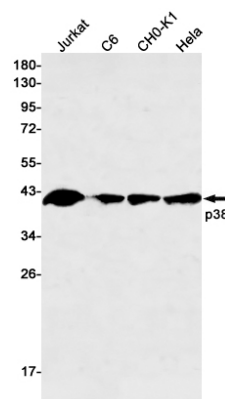
## Dilutions

WB: 1/1000-1/2000

IHC: 1/20-1/100

ICC/IF: 1/20-1/100

## Validations



Western blot detection of p38 in Jurkat, C6, CHO-K1, HeLa cell lysates using p38 Rabbit mAb(1:500 diluted). Predicted band size: 41 kDa. Observed band size: 41 kDa.