

BCAS2 Polyclonal Antibody



Catalog Number: 166624

Product name

BCAS2 Polyclonal Antibody

Specificity

Human, Mouse, Rat

Antibody description

Polyclonal antibody to BCAS2

Preparation

Antigen: Recombinant fusion protein containing a sequence corresponding to amino acids 1-225 of human BCAS2 (NP_005863.1).

Formulation

PBS with 0.02% sodium azide, 50% glycerol, pH7.3.

Storage

Store at -20°C. Avoid freeze / thaw cycles.

Clonality

Polyclonal

Ig Type

Rabbit IgG

Applications

WB, IHC, IF

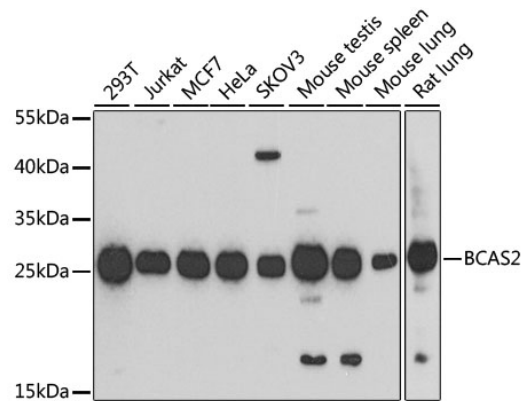
Dilutions

WB 1:500 - 1:2000

IHC 1:50 - 1:200

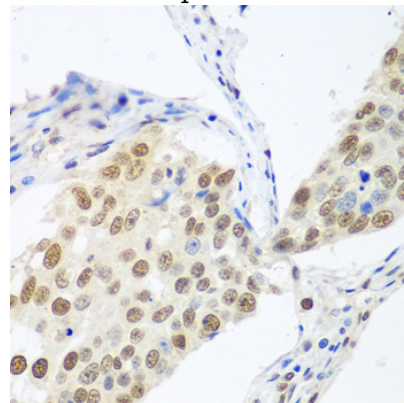
IF 1:50 - 1:200

Validations



Western blot - BCAS2 Polyclonal Antibody

Western blot analysis of extracts of various cell lines, using BCAS2 antibody at 1:1000 dilution. Secondary antibody: HRP Goat Anti-Rabbit IgG (H+L) at 1:10000 dilution. Lysates/proteins: 25ug per lane. Blocking buffer: 3% nonfat dry milk in TBST. Detection: ECL Basic Kit. Exposure time: 90s.



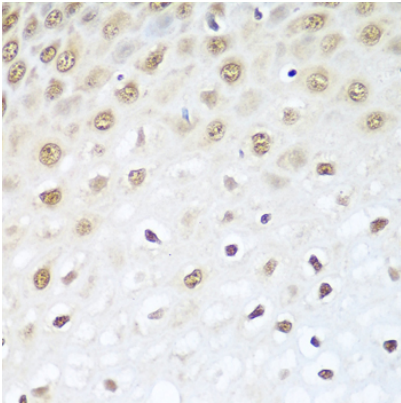
Immunohistochemistry - BCAS2 Polyclonal Antibody

Immunohistochemistry of paraffin-embedded human lung cancer using BCAS2 antibody at dilution of 1:100 (40x lens).

BCAS2 Polyclonal Antibody

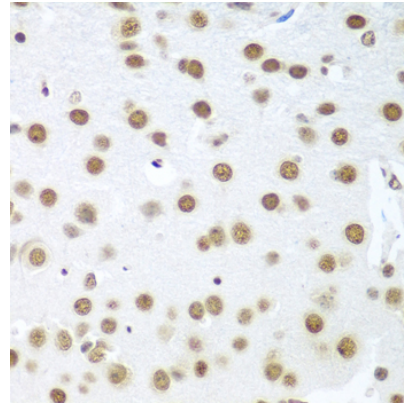


Catalog Number: 166624



Immunohistochemistry - BCAS2 Polyclonal Antibody

Immunohistochemistry of paraffin-embedded human esophagus using BCAS2 antibody at dilution of 1:100 (40x lens).



Immunohistochemistry - BCAS2 Polyclonal Antibody

Immunohistochemistry of paraffin-embedded mouse brain using BCAS2 antibody at dilution of 1:100 (40x lens).