

# RFC3 antibody

Catalog Number: 114624

---

## Product name

RFC3 antibody

## Specificity

human, mouse, rat; other species not tested.

## Antibody description

RFC3 Rabbit Polyclonal antibody. Positive WB detected in human liver tissue, HeLa cells, human heart tissue. Observed molecular weight by Western-blot: 38kd

## Preparation

This antibody was obtained by immunization of RFC3 recombinant protein (Accession Number: NM\_002915). Purification method: Antigen affinity purified.

## Formulation

PBS with 0.1% sodium azide and 50% glycerol pH 7.3.

## Storage

Store at -20°C. DO NOT ALIQUOT

## Clonality

Polyclonal

## Ig Type

Rabbit IgG

## Applications

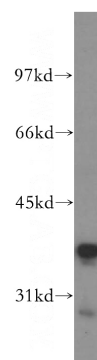
ELISA, WB

## Dilutions

Recommended Dilution:

WB: 1:500-1:5000

## Validations



human liver tissue were subjected to SDS PAGE followed by western blot with Catalog No:114624(RFC3 antibody) at dilution of 1:500