

# Human TGF-beta 1/TGFB1 (His Tag) recombinant protein



Catalog Number: 503624

## General Information

### Gene Name Synonym

Latency-associated peptide

### Protein Construction

A DNA sequence encoding the full length of human TGF $\beta$ 1 (NP\_000651.3) (Met 1-Ser 390) was fused with a C-terminal polyhistidine tag.

### Organism

Human

### Expression Host

Human Cells

## QC Testing

### Activity

Measured by its ability to bind biotinylated Human ALK1-Fc (Cat:501915) in functional Elisa.

### Purity

> 95 % as determined by SDS-PAGE

### Endotoxin

< 1.0 EU per  $\mu$ g of the protein as determined by the LAL method

### Stability

Samples are stable for up to twelve months from date of receipt at -70°C

### Predicted N terminal

Leu 30 & Ala 279

### Molecular Mass

The recombinant human latent TGF $\beta$ 1 consists of 370 amino acids and has a calculated molecular

mass of 42.4 kDa. In SDS-PAGE under reducing conditions, the apparent molecular mass of rh TGF $\beta$ 1 is approximately 16, 38 and 55 kDa corresponding to mature TGF $\beta$ 1, LAP protein and inactive latent TGF $\beta$ 1 respectively due to glycosylation. In non-reduced SDS-PAGE, it migrates as an approximately 110 kDa protein consisting of a TGF $\beta$ 1 homodimer non-covalently linked to a LAP homodimer.

### Formulation

Lyophilized from sterile PBS, pH 7.4

1. 5 % trehalose and mannitol are added as protectants before lyophilization.

2. Please contact us for any concerns or special requirements.

## Usage Guide

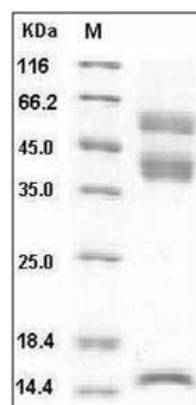
### Storage

Store it under sterile conditions at -20°C to -80°C. It is recommended that the protein be aliquoted for optimal storage. Avoid repeated freeze-thaw cycles.

### Reconstitution

Adding sterile water, prepare a stock solution of 0.25 mg/ml. Concentration is measured by UV-Vis.

### SDS-PAGE



Human Latent TGF-beta 1 / TGFB1 Protein (His Tag) SDS-PAGE