

Anti-CADM4 antibody



Catalog Number: 142624

Product name

Anti-CADM4 antibody

Specificity

Human CADM4 / IGSF4C / NECL-4

Antibody description

Rabbit Polyclonal to Human CADM4

Preparation

Produced in rabbits immunized with a synthetic peptide corresponding to the center region of the Human CADM4 / IGSF4C / NECL-4, and purified by antigen affinity chromatography.

Formulation

0.2 µm filtered solution in PBS

Storage

This antibody can be stored at 2°C-8°C for one month without detectable loss of activity. Antibody products are stable for twelve months from date of receipt when stored at -20°C to -80°C.

Preservative-Free.

Sodium azide is recommended to avoid contamination (final concentration 0.05%-0.1%). It is toxic to cells and should be disposed of

properly. Avoid repeated freeze-thaw cycles.

Clonality

Polyclonal

Ig Type

Rabbit IgG

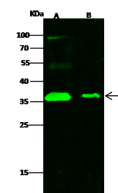
Applications

WB

Dilutions

WB: 1-5 µg/ml

Validations



Lanes	A	B
Items		
Sample (whole cell lysate)	PC3	NIH 3T3
Sample Volume (µg/lane)	30	30
Gel	13% SDS-PAGE reducing gel	
Recommended Concentration	1.5 µg/ml	
Secondary Antibody	Dylight 800 labeled Antibody to Rabbit IgG (H+L), at 1:5000 dilution.	
Developed using Odyssey imaging system.		
Explanation	Predicted band size : 43kDa Observed band size : 37 kDa Additional bands at : 51 kDa and 90 kDa (We are unsure as to the identity of these extra bands.)	

CADM4 / IGSF4C / NECL-4 Antibody, Rabbit PAb, Antigen Affinity Purified, Western blot