

General Information

Gene Name Synonym

Guanylate cyclase activator 1A

Protein Construction

A DNA sequence encoding the human GUCA1A (P43080)(Met1-Gly201) was expressed and purified with two additional amino acids (Gly & Pro) at the N-terminus.

Organism

Human

Expression Host

Baculovirus-Insect Cells

QC Testing

Purity

> 85 % as determined by SDS-PAGE

Endotoxin

< 1.0 EU per μg of the protein as determined by the LAL method

Stability

Samples are stable for up to twelve months from date of receipt at -70°C

Predicted N terminal

Gly

Molecular Mass

The secreted recombinant human GUCA1A

consists of 203 amino acids and predicts a molecular mass of 23.1 KDa. The apparent molecular mass of the protein is approximately 20 KDa in SDS-PAGE under reducing conditions due to glycosylation.

Formulation

Lyophilized from sterile 20mM Tris, 500mM NaCl, 10% glycerol, pH 7.4.

1. 5 % trehalose and mannitol are added as protectants before lyophilization.

2. Please contact us for any concerns or special requirements.

Usage Guide

Storage

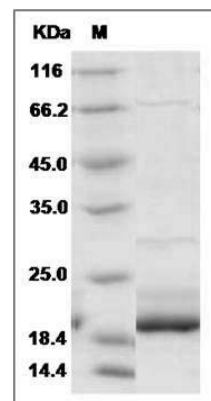
Store it under sterile conditions at -20°C to -80°C .

It is recommended that the protein be aliquoted for optimal storage. Avoid repeated freeze-thaw cycles.

Reconstitution

Adding sterile water, prepare a stock solution of 0.25 mg/ml. Concentration is measured by UV-Vis.

SDS-PAGE



Human GCAP1 / GUCA1A Protein SDS-PAGE