

# PROX1 antibody



Catalog Number: 114224

## Product name

PROX1 antibody

WB: 1:200-1:2000

IHC: 1:20-1:200

## Specificity

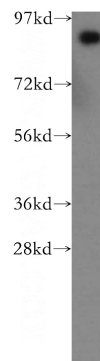
Human, Mouse, Rat; other species not tested.

IF: 1:20-1:200

## Antibody description

PROX1 Rabbit Polyclonal antibody. Positive WB detected in human liver tissue, HepG2 cells, MCF7 cells, mouse pancreas tissue. Positive FC detected in HepG2 cells. Positive IHC detected in human lymphoma tissue. Positive IF detected in HepG2 cells. Observed molecular weight by Western-blot: 90 kDa

## Validations



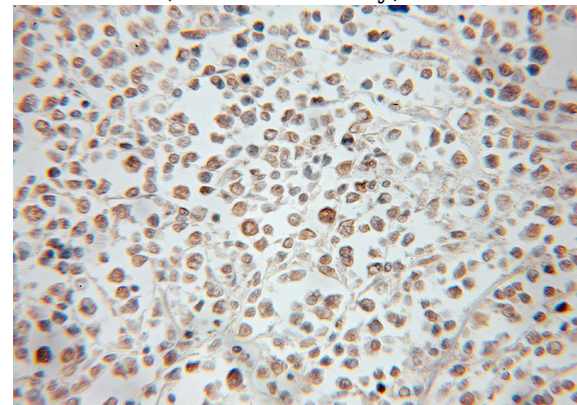
## Preparation

This antibody was obtained by immunization of PROX1 recombinant protein (Accession Number: XM\_047425575). Purification method: Antigen affinity purified.

human liver tissue were subjected to SDS PAGE followed by western blot with Catalog No:114224(PROX1 antibody) at dilution of 1:500

## Formulation

PBS with 0.1% sodium azide and 50% glycerol pH 7.3.



## Storage

Store at -20°C. DO NOT ALIQUOT

## Clonality

Polyclonal

Immunohistochemical of paraffin-embedded human lymphoma using Catalog No:114224(PROX1 antibody) at dilution of 1:50 (under 10x lens)

## Ig Type

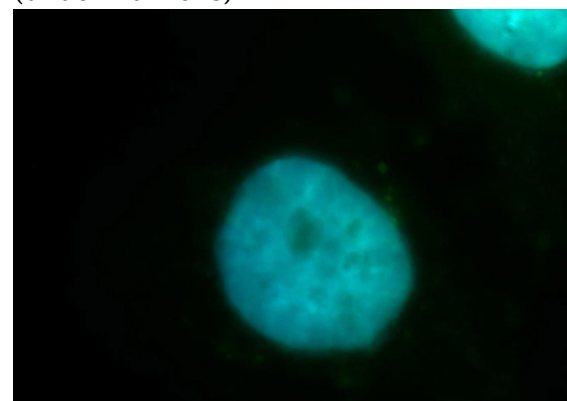
Rabbit IgG

## Applications

ELISA, IHC, IF, FC, WB

## Dilutions

Recommended Dilution:



# PROX1 antibody



Catalog Number: 114224

Immunofluorescent analysis of HepG2 cells, using PROX1 antibody Catalog No:114224 at 1:100 dilution and FITC-labeled donkey anti-rabbit IgG(green). Blue pseudocolor = DAPI (fluorescent DNA dye).

1X10<sup>6</sup> HepG2 cells were stained with 0.2ug PROX1 antibody (Catalog No:114224, red) and control antibody (blue). Fixed with 90% MeOH blocked with 3% BSA (30 min). Alexa Fluor 488-conjugated AffiniPure Goat Anti-Rabbit IgG(H+L) with dilution 1:1000.

