

SRSF1 Polyclonal Antibody

Catalog Number: 163224

Product name

SRSF1 Polyclonal Antibody

Specificity

Human, Mouse, Rat

Antibody description

Polyclonal antibody to SRSF1

Preparation

Antigen: Recombinant fusion protein containing a sequence corresponding to amino acids 1-248 of human SRSF1 (NP_008855.1).

Formulation

PBS with 0.02% sodium azide, 50% glycerol, pH7.3.

Storage

Store at -20°C. Avoid freeze / thaw cycles.

Clonality

Polyclonal

Ig Type

Rabbit IgG

Applications

WB, IHC, IF

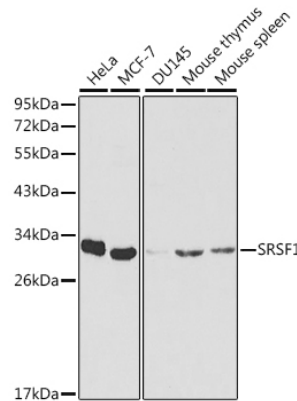
Dilutions

WB 1:500 - 1:2000

IHC 1:50 - 1:200

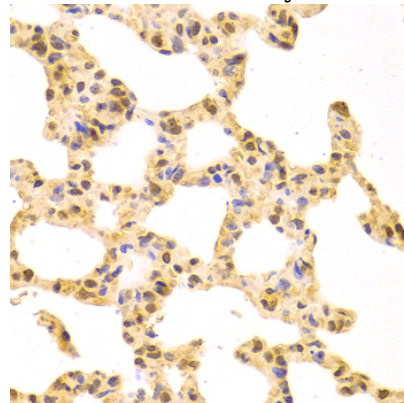
IF 1:50 - 1:200

Validations



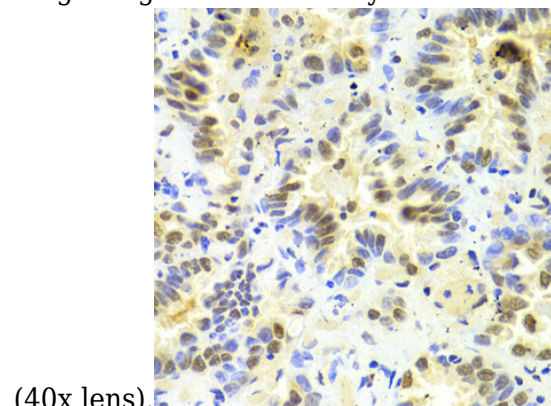
Western blot - SRSF1 Polyclonal Antibody

Western blot analysis of extracts of various cell lines, using SRSF1 antibody at 1:1000 dilution. Secondary antibody: HRP Goat Anti-Rabbit IgG (H+L) at 1:10000 dilution. Lysates/proteins: 25ug per lane. Blocking buffer: 3% nonfat dry milk in TBST.



Immunohistochemistry - SRSF1 Polyclonal Antibody

Immunohistochemistry of paraffin-embedded rat lung using SRSF1 Antibody at dilution of 1:100



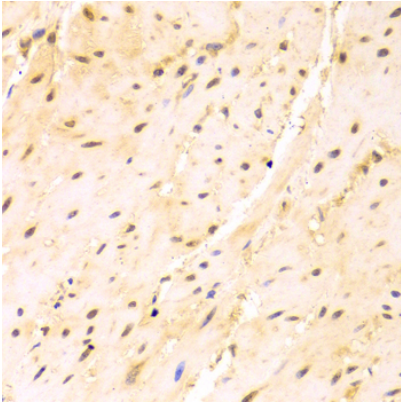
SRSF1 Polyclonal Antibody



Catalog Number: 163224

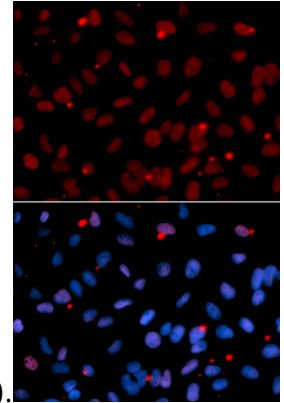
Immunohistochemistry - SRSF1 Polyclonal Antibody

Immunohistochemistry of paraffin-embedded human lung cancer using SRSF1 Antibody at dilution of 1:100 (40x lens).



Immunohistochemistry - SRSF1 Polyclonal Antibody

Immunohistochemistry of paraffin-embedded mouse esophagus using SRSF1 Antibody at



dilution of 1:100 (40x lens).

Immunofluorescence - SRSF1 Polyclonal Antibody

Immunofluorescence analysis of U2OS cells using SRSF1 antibody . Blue: DAPI for nuclear staining.