

RRM1-Specific antibody



Catalog Number: 114924

Product name

RRM1-Specific antibody

Specificity

Human, Mouse, Rat; other species not tested.

Antibody description

RRM1-Specific Rabbit Polyclonal antibody.
Positive IF detected in HepG2 cells. Positive WB detected in A549 cells, HEK-293 cells, HeLa cells. Observed molecular weight by Western-blot: 80-90 kDa

Preparation

This antibody was obtained by immunization of Peptide (Accession Number: NM_001033).
Purification method: Antigen affinity purified.

Formulation

PBS with 0.02% sodium azide and 50% glycerol pH 7.3.

Storage

Store at -20°C. DO NOT ALIQUOT

Clonality

Polyclonal

Ig Type

Rabbit IgG

Applications

ELISA, WB, IF

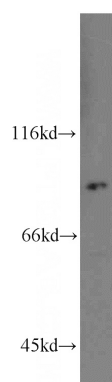
Dilutions

Recommended Dilution:

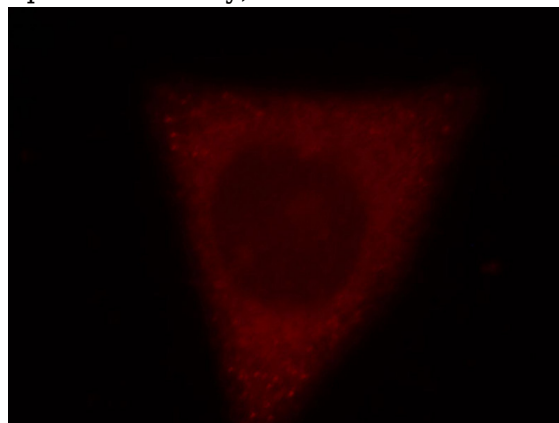
WB: 1:200-1:1000

IF: 1:10-1:100

Validations



A549 cells were subjected to SDS PAGE followed by western blot with Catalog No:114924(RRM1-Specific antibody) at dilution of 1:100



Immunofluorescent analysis of HepG2 cells, using RRM1 antibody Catalog No:114924 at 1:25 dilution and Rhodamine-labeled goat anti-rabbit IgG (red).