

Rhesus CLEC5A / MDL1 / MDL-1 (Fc Tag) recombinant protein



Catalog Number: 503924

General Information

Protein Construction

A DNA sequence encoding the rhesus CLEC5A (XP_001085243.1) (Pro28-Arg188) was expressed with the Fc region of mouse IgG1 at the N-terminus.

Organism

Rhesus

Expression Host

Human Cells

QC Testing

Purity

> 90 % as determined by SDS-PAGE

Endotoxin

< 1.0 EU per μg of the protein as determined by the LAL method

Stability

Samples are stable for up to twelve months from date of receipt at -70°C

Predicted N terminal

Asp

Molecular Mass

The recombinant rhesus CLEC5A comprises 397 amino acids and has a calculated molecular mass

of 45.3 KDa.

Formulation

Lyophilized from sterile PBS, pH 7.4.

1. 5 % trehalose and mannitol are added as protectants before lyophilization.

2. Please contact us for any concerns or special requirements.

Usage Guide

Storage

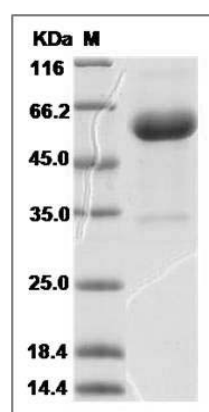
Store it under sterile conditions at -20°C to -80°C .

It is recommended that the protein be aliquoted for optimal storage. Avoid repeated freeze-thaw cycles.

Reconstitution

Adding sterile water, prepare a stock solution of 0.25 mg/ml. Concentration is measured by UV-Vis.

SDS-PAGE



Cynomolgus CLEC5A / MDL1 / MDL-1 Protein (Fc Tag) SDS-PAGE