

# KCNAB1 antibody

Catalog Number: 111924

## Product name

KCNAB1 antibody

IHC: 1:20-1:200

IF: 1:20-1:200

## Specificity

human, mouse, rat; other species not tested.

## Antibody description

KCNAB1 Rabbit Polyclonal antibody. Positive WB detected in mouse heart tissue. Positive IF detected in Hela. Positive IHC detected in human brain. Observed molecular weight by Western-blot: 68kd

## Preparation

This antibody was obtained by immunization of KCNAB1 recombinant protein (Accession Number: NM\_172159). Purification method: Antigen affinity purified.

## Formulation

PBS with 0.02% sodium azide and 50% glycerol pH 7.3.

## Storage

Store at -20°C. DO NOT ALIQUOT

## Clonality

Polyclonal

## Ig Type

Rabbit IgG

## Applications

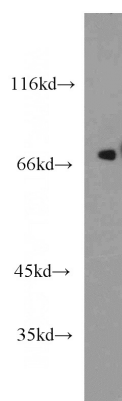
ELISA, WB, IHC, IF

## Dilutions

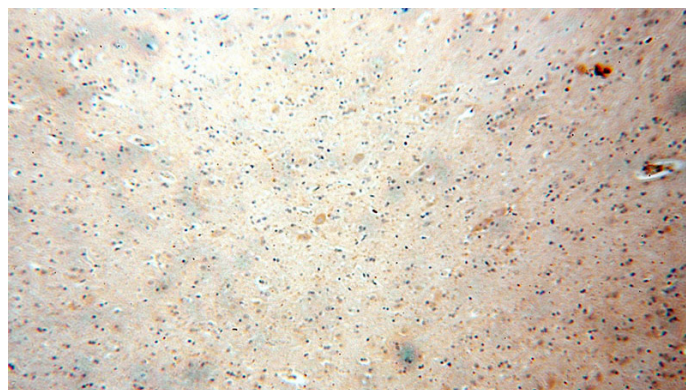
Recommended Dilution:

WB: 1:500-1:5000

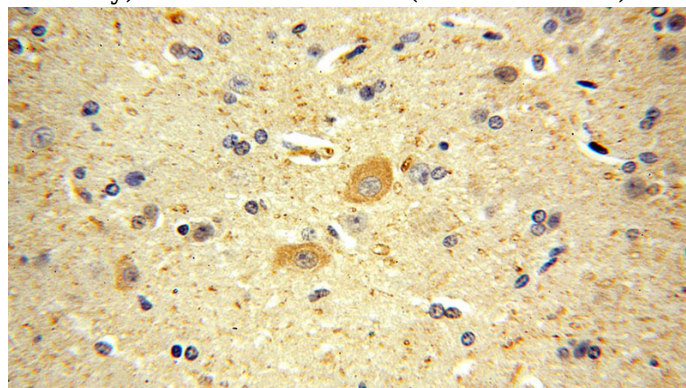
## Validations



mouse heart tissue were subjected to SDS PAGE followed by western blot with Catalog No:111924(KCNAB1 antibody) at dilution of 1:1500



Immunohistochemical of paraffin-embedded human brain using Catalog No:111924(KCNAB1 antibody) at dilution of 1:100 (under 10x lens)



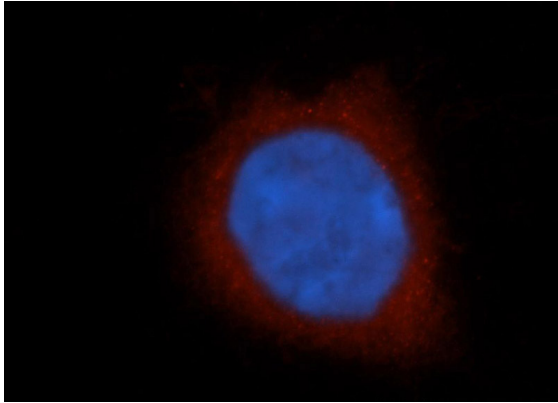
Immunohistochemical of paraffin-embedded

# KCNAB1 antibody

Catalog Number: 111924

---

human brain using Catalog No:111924(KCNAB1 antibody) at dilution of 1:100 (under 40x lens)



Immunofluorescent analysis of HeLa cells, using KCNAB1 antibody Catalog No:111924 at 1:50 dilution and Rhodamine-labeled goat anti-rabbit IgG (red). Blue pseudocolor = DAPI (fluorescent DNA dye).