

# Human CCL4 / MIP1B (His Tag) recombinant protein



Catalog Number: 500924

## General Information

### Gene Name Synonym

G-26 T-lymphocyte-secreted protein; HC21; Lymphocyte activation gene 1 protein; MIP-1-beta(1-69); Macrophage inflammatory protein 1-beta; PAT 744; Protein H400; SIS-gamma; Small-inducible cytokine A4; T-cell activation protein 2; MIP-1-beta(3-69)

### Protein Construction

A DNA sequence encoding human CCL4 (NP\_002975.1) (Ala24-Gln92) was expressed with a polyhistidine tag at the C-terminus.

### Organism

Human

### Expression Host

Yeast

## QC Testing

### Purity

> 90 % as determined by SDS-PAGE

### Endotoxin

Please contact us for more information.

### Stability

Samples are stable for up to twelve months from date of receipt at -70°C

### Predicted N terminal

Ala 24

### Molecular Mass

The recombinant human CCL4 consists of 79 amino acids and predicts a molecular mass of 9.2 KDa. It migrates as an approximately 12-16 KDa band in SDS-PAGE under reducing conditions.

### Formulation

Lyophilized from sterile 0.1 % TFA, 14 % CAN. 1. 5 % trehalose and mannitol are added as protectants before lyophilization. 2. Please contact us for any concerns or special requirements.

## Usage Guide

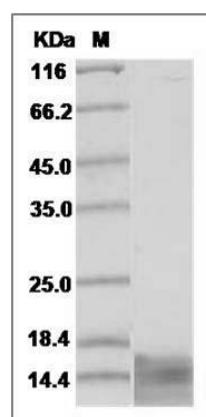
### Storage

Store it under sterile conditions at -20°C to -80°C. It is recommended that the protein be aliquoted for optimal storage. Avoid repeated freeze-thaw cycles.

### Reconstitution

Adding sterile water, prepare a stock solution of 0.25 mg/ml. Concentration is measured by UV-Vis.

### SDS-PAGE



Human CCL4 / MIP1B Protein (His Tag) SDS-PAGE