

Anti-ILDR1 antibody



Catalog Number: 175524

Product name

Anti-ILDR1 antibody

Specificity

Human, Mouse, Rat, Pig, Cow, Horse, Rabbit, Sheep

Antibody description

Rabbit polyclonal antibody to ILDR1

Preparation

This antigen of this antibody was klh conjugated synthetic peptide derived from human ildr1 101-200/546

Formulation

Liquid, 0.01M TBS(pH7.4) with 1% BSA, 0.03% Proclin300 and 50% Glycerol.

Storage

Store at -20°C for one year. Avoid repeated freeze/thaw cycles. The lyophilized antibody is stable at room temperature for at least one month and for greater than a year when kept at -20°C. When reconstituted in sterile pH 7.4 0.01M PBS or diluent of antibody the antibody is stable for at least two weeks at 2-4°C.

Clonality

Polyclonal

Ig Type

Rabbit IgG

Applications

WB, FC

Dilutions

WB:1:500-2000

FC:3ug/Test

Validations

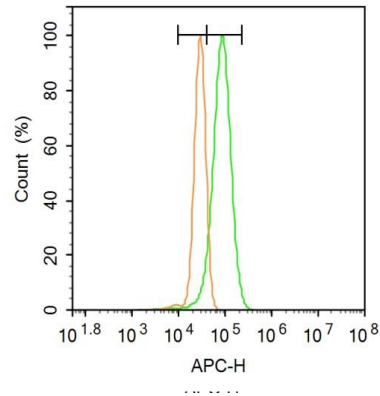
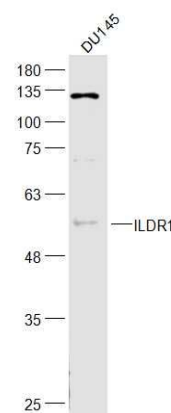


Fig1: Blank control: A431.; Primary Antibody (green line): Rabbit Anti-ILDR1 antibody ; Dilution: 1µg /10⁶ cells;; Isotype Control Antibody (orange line): Rabbit IgG .; Secondary Antibody: Goat anti-rabbit IgG-AF647; Dilution: 1µg /test.; Protocol; The cells were fixed with 4% PFA (10min at room temperature)and then permeabilized with 20% PBST for 20 min at room temperature. The cells were then incubated in 5%BSA to block non-specific protein-protein interactions for 30 min at -20°C .Cells stained with Primary Antibody for 30 min at room temperature. The secondary antibody used for 40 min at room temperature. Acquisition of 20,000 events was



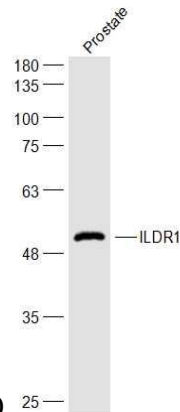
performed.

Fig2: Sample;; DU145(Human) Cell Lysate at 30 ug; Primary: Anti-ILDR1 at 1/300 dilution; Secondary: IRDye800CW Goat Anti-Rabbit IgG at 1/20000 dilution; Predicted band size: 60 kD;

Anti-ILDR1 antibody

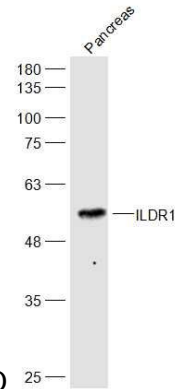


Catalog Number: 175524



Observed band size: 56 kD

Fig3: Sample:; Prostate(Rat) Cell Lysate at 40 ug; Primary: Anti-ILDR1 at 1/300 dilution; Secondary: IRDye800CW Goat Anti-Rabbit IgG at 1/20000 dilution; Predicted band size: 60 kD; Observed



band size: 56 kD

Fig4: Sample:; Pancreas(Mouse) Cell Lysate at 40 ug; Primary: Anti-ILDR1 at 1/300 dilution; Secondary: IRDye800CW Goat Anti-Rabbit IgG at 1/20000 dilution; Predicted band size: 60 kD; Observed band size: 56kD