

Human Leptin recombinant protein



Catalog Number: 502524

General Information

Gene Name Synonym

Obesity factor

Protein Construction

A DNA sequence encoding the mature form of human Leptin (NP_000221.1) (Val 22-Cys 167) was expressed, with an additional Met.

Organism

Human

Expression Host

E. coli

QC Testing

Activity

Measured by its binding ability in a functional ELISA.

1. Immobilized human Leptin at 1.25 $\mu\text{g/ml}$ (100 $\mu\text{l/well}$) can bind human Leptin receptor Fc chimera with a linear range of 0.032-4.0 $\mu\text{g/ml}$.
2. Immobilized human Leptin at 5 $\mu\text{g/ml}$ (100 $\mu\text{l/well}$) can bind human Leptin receptor his with a linear range of 0.032-4.0 $\mu\text{g/ml}$.

Purity

> 98 % as determined by SDS-PAGE

Endotoxin

Please contact us for more information.

Stability

Samples are stable for up to twelve months from date of receipt at -70°C

Predicted N terminal

Met

Molecular Mass

The recombinant human leptin consists of 147 amino acids and predicts a molecular mass of 16 kDa. The apparent molecular mass of rhLEP is approximately 13 kDa in SDS-PAGE under reducing conditions.

Formulation

- Lyophilized from sterile PBS, pH 7.4
1. 5 % trehalose and mannitol are added as protectants before lyophilization.
 2. Please contact us for any concerns or special requirements.

Usage Guide

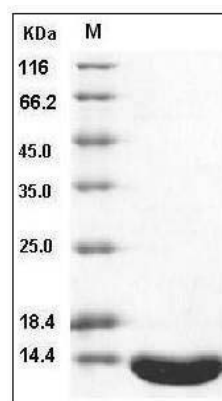
Storage

Store it under sterile conditions at -20°C to -80°C . It is recommended that the protein be aliquoted for optimal storage. Avoid repeated freeze-thaw cycles.

Reconstitution

Adding sterile water, prepare a stock solution of 0.25 mg/ml. Concentration is measured by UV-Vis.

SDS-PAGE



Human Leptin Protein SDS-PAGE