

PPIF-Specific antibody



Catalog Number: 114124

Product name

PPIF-Specific antibody

WB: 1:500-1:5000

IP: 1:500-1:5000

Specificity

Human, Mouse, Rat; other species not tested.

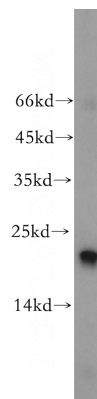
IHC: 1:20-1:200

IF: 1:10-1:100

Antibody description

PPIF-Specific Rabbit Polyclonal antibody. Positive IP detected in mouse heart tissue. Positive WB detected in human heart tissue, HepG2 cells, mouse brain tissue, rat heart tissue. Positive IHC detected in human heart tissue. Positive IF detected in MCF-7 cells. Observed molecular weight by Western-blot: 22 kDa

Validations



Preparation

This antibody was obtained by immunization of PPIF-Specific recombinant protein (Accession Number: NM_005729). Purification method: Antigen affinity purified.

human heart tissue were subjected to SDS PAGE followed by western blot with Catalog No:114124(PPIF-Specific antibody) at dilution of

Formulation

PBS with 0.02% sodium azide and 50% glycerol pH 7.3.

Storage

Store at -20°C. DO NOT ALIQUOT

Clonality

Polyclonal

Ig Type

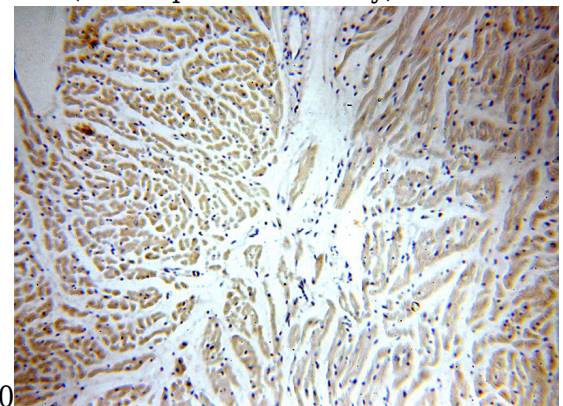
Rabbit IgG

Applications

ELISA, WB, IHC, IF, IP

Dilutions

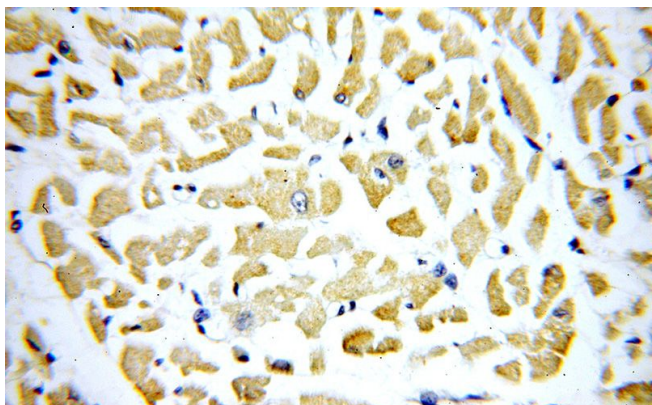
Recommended Dilution:



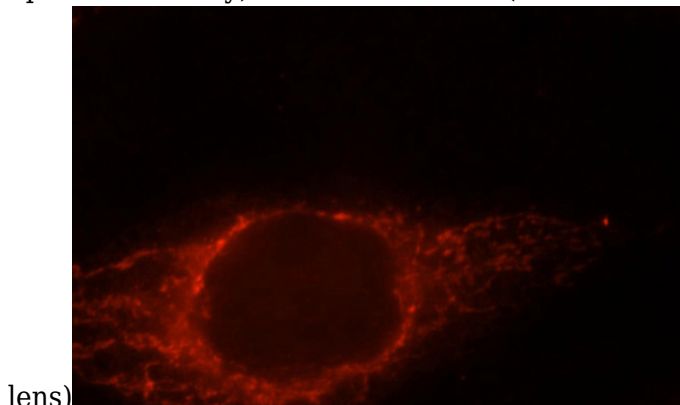
1:1000
Immunohistochemical of paraffin-embedded human heart using Catalog No:114124(PPIF-Specific antibody) at dilution of 1:50 (under 10x lens)

PPIF-Specific antibody

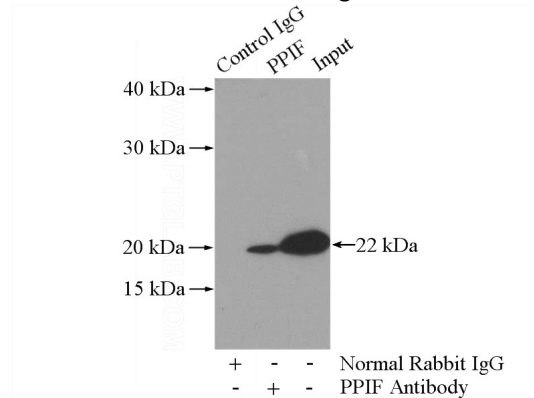
Catalog Number: 114124



Immunohistochemical of paraffin-embedded human heart using Catalog No:114124(PPIF-Specific antibody) at dilution of 1:50 (under 40x



Immunofluorescent analysis of MCF-7 cells, using PPIF antibody Catalog No:114124 at 1:25 dilution and Rhodamine-labeled goat anti-rabbit IgG (red).



IP Result of anti-PPIF-Specific (IP:Catalog No:114124, 3ug; Detection:Catalog No:114124 1:1000) with mouse heart tissue lysate 4000ug.