

# KRR1 antibody

Catalog Number: 112124

---

## Product name

KRR1 antibody

## Specificity

human, mouse, rat; other species not tested.

## Antibody description

KRR1 Rabbit Polyclonal antibody. Positive WB detected in human brain tissue, human kidney tissue. Observed molecular weight by Western-blot: 44kd

## Preparation

This antibody was obtained by immunization of KRR1 recombinant protein (Accession Number: NM\_007043). Purification method: Antigen affinity purified.

## Formulation

PBS with 0.1% sodium azide and 50% glycerol pH 7.3.

## Storage

Store at -20°C. DO NOT ALIQUOT

## Clonality

Polyclonal

## Ig Type

Rabbit IgG

## Applications

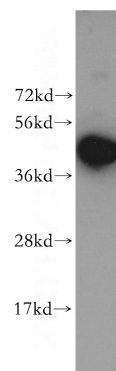
ELISA, WB

## Dilutions

Recommended Dilution:

WB: 1:500-1:5000

## Validations



human brain tissue were subjected to SDS PAGE followed by western blot with Catalog No:112124(KRR1 antibody) at dilution of 1:500