

WFS1 antibody



Catalog Number: 116824

Product name

WFS1 antibody

Specificity

Human, Mouse, Rat; other species not tested.

Antibody description

WFS1 Rabbit Polyclonal antibody. Positive IHC detected in human pancreas tissue, human heart tissue, human ovary tumor tissue. Positive IP detected in mouse brain tissue. Positive WB detected in HeLa cells, HEK-293 cells, human heart tissue, human skeletal muscle tissue, mouse brain tissue, SH-SY5Y cells. Observed molecular weight by Western-blot: 95-100 kDa

Preparation

This antibody was obtained by immunization of WFS1 recombinant protein (Accession Number: NM_006005). Purification method: Antigen affinity purified.

Formulation

PBS with 0.1% sodium azide and 50% glycerol pH 7.3.

Storage

Store at -20°C. DO NOT ALIQUOT

Clonality

Polyclonal

Ig Type

Rabbit IgG

Applications

ELISA, WB, IHC, IP

Dilutions

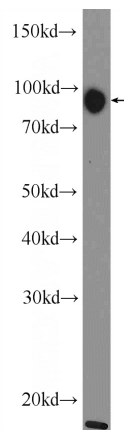
Recommended Dilution:


WB: 1:200-1:2000

IP: 1:200-1:2000

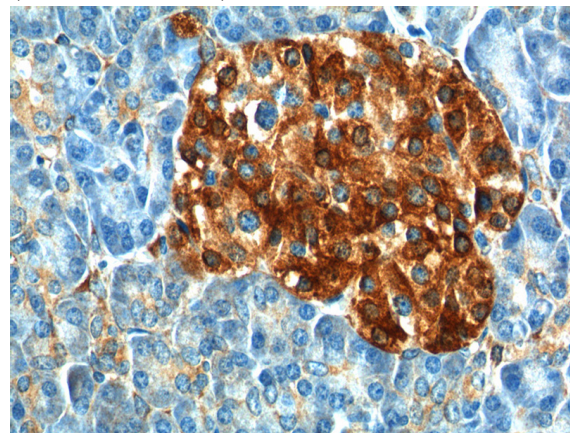
IHC: 1:50-1:500

Validations



HeLa cells were subjected to SDS PAGE followed by western blot with Catalog No:116824(WFS1 Antibody) at dilution of 1:600 

Immunohistochemistry of paraffin-embedded human pancreas tissue slide using Catalog No:116824(WFS1 Antibody) at dilution of 1:200 (under 10x lens).



Immunohistochemistry of paraffin-embedded human pancreas tissue slide using Catalog No:116824(WFS1 Antibody) at dilution of 1:200

WFS1 antibody

Catalog Number: 116824

IP Result of anti-WFS1 (IP:Catalog No:116824, 4ug; Detection:Catalog No:116824 1:600) with mouse brain tissue lysate 5200ug.

