

General Information

Gene Name Synonym

Po66 carbohydrate-binding protein; Prostate carcinoma tumor antigen 1

Protein Construction

A DNA sequence encoding human LGALS8 (AAF19370.1) (Met 1-Trp 317) was fused with the GST tag at the N-terminus.

Organism

Human

Expression Host

E. coli

QC Testing

Activity

Measured by its ability to agglutinate human red blood cells. The ED₅₀ for this effect is typically 0.2-1 µg/ml.

Purity

> 76 % as determined by SDS-PAGE

Endotoxin

Please contact us for more information.

Stability

Samples are stable for up to twelve months from date of receipt at -70°C

Predicted N terminal

Met

Molecular Mass

The recombinant human LGALS8/GST chimera consists of 550 amino acids and predicts a molecular mass of 62.7 kDa. The apparent molecular mass of rh LGALS8/GST is approximately 60 kDa in SDS-PAGE under reducing conditions.

Formulation

Lyophilized from sterile 50mM Tris, 0.1 M NaCl, pH 8.0

1. 5 % trehalose and mannitol are added as protectants before lyophilization.

2. Please contact us for any concerns or special requirements.

Usage Guide

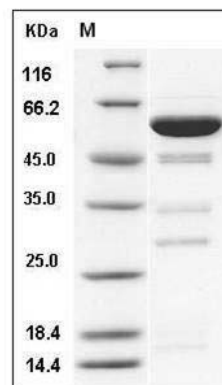
Storage

Store it under sterile conditions at -20°C to -80°C. It is recommended that the protein be aliquoted for optimal storage. Avoid repeated freeze-thaw cycles.

Reconstitution

Adding sterile water, prepare a stock solution of 0.25 mg/ml. Concentration is measured by UV-Vis.

SDS-PAGE



Human Galectin-8 / LGALS8 Protein (GST Tag)
SDS-PAGE