

## General Information

### Gene Name Synonym

Matrix metalloproteinase RASI; Matrix metalloproteinase-18

### Protein Construction

A DNA sequence encoding the catalytic domain of human MMP19 (Q99542-1) (Leu101-Gly256) was expressed, with a N-terminal Met.

### Organism

Human

### Expression Host

E. coli

## QC Testing

### Purity

> 85 % as determined by SDS-PAGE

### Endotoxin

Please contact us for more information.

### Stability

Samples are stable for up to twelve months from date of receipt at -70°C

### Predicted N terminal

Met

### Molecular Mass

The recombinant human MMP19 consists of 157

amino acids and predicts a molecular mass of 17.6 KDa. It migrates as an approximately 18 KDa band in SDS-PAGE under reducing conditions.

### Formulation

Lyophilized from sterile 20mM Tris, 100mM NaCl, 0.5M Arg, 5mM CaCl<sub>2</sub>, 0.03% Brij35, 50uM ZnCl<sub>2</sub>, 1/0.1mM GSH/GSSG, pH 8.0

1. 5 % trehalose and mannitol are added as protectants before lyophilization.

2. Please contact us for any concerns or special requirements.

## Usage Guide

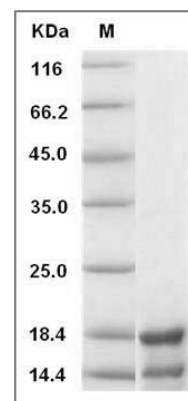
### Storage

Store it under sterile conditions at -20°C to -80°C. It is recommended that the protein be aliquoted for optimal storage. Avoid repeated freeze-thaw cycles.

### Reconstitution

Adding sterile water, prepare a stock solution of 0.25 mg/ml. Concentration is measured by UV-Vis.

### SDS-PAGE



Human RASI-1 / MMP19 Protein SDS-PAGE