

Phospho-Map2k5-S311/T315 pAb



Catalog Number: 166424

Product name

Phospho-Map2k5-S311/T315 pAb

Specificity

Human, Mouse, Rat

Antibody description

Polyclonal antibody to Phospho-Map2k5-S311/T315

Preparation

Antigen: A phospho specific peptide corresponding to residues surrounding S311/T315 of rat Map2k5

Formulation

PBS with 0.02% sodium azide, 50% glycerol, pH7.3.

Storage

Store at -20°C. Avoid freeze / thaw cycles.

Clonality

Polyclonal

Ig Type

Rabbit IgG

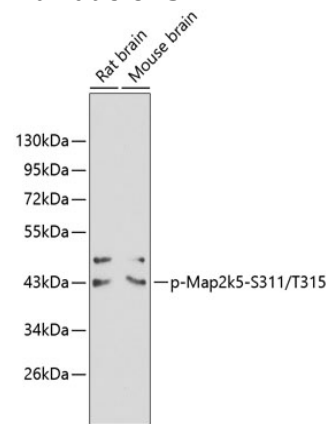
Applications

WB

Dilutions

WB 1:500 - 1:2000

Validations



Western blot - Phospho-Map2k5-S311/T315 pAb

Western blot analysis of extracts from rat and mouse brain tissue using phospho-Map2k5-S311/T315 antibody. Secondary antibody: HRP Goat Anti-Rabbit IgG (H+L) at 1:10000 dilution. Lysates/proteins: 25ug per lane. Blocking buffer: 3% BSA.