

RAB26 antibody



Catalog Number: 114424

Product name

RAB26 antibody

Immunogen

[Human RAB26 Recombinant protein \(GST tag\)](#)

Specificity

Human, Mouse, Rat; other species not tested.

Antibody description

RAB26 Rabbit Polyclonal antibody. Positive WB detected in mouse pancreas tissue. Observed molecular weight by Western-blot: 27-30 kDa

Preparation

This antibody was obtained by immunization of RAB26 recombinant protein (Accession Number: NM_014353). Purification method: Antigen affinity purified.

Formulation

PBS with 0.02% sodium azide and 50% glycerol pH 7.3.

Storage

Store at -20°C. DO NOT ALIQUOT

Clonality

Polyclonal

Ig Type

Rabbit IgG

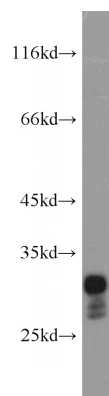
Applications

ELISA, WB

Dilutions

Recommended Dilution:
WB: 1:200-1:2000

Validations



mouse pancreas tissue were subjected to SDS PAGE followed by western blot with Catalog No:114424(RAB26 antibody) at dilution of 1:300