

# Human CD200R1 (His & Fc Tag) recombinant protein



Catalog Number: 503424

## General Information

### Protein Construction

A DNA sequence encoding the human CD200R1 (AAI43394.1) extracellular domain (Met 1-Leu 266) was fused with the C-terminal polyhistidine-tagged Fc region of human IgG1 at the C-terminus.

### Organism

Human

### Expression Host

Human Cells

### QC Testing

#### Activity

Measured by its binding ability in a functional ELISA. Immobilized recombinant human CD200 at 1 µg/ml (100ul/well) can bind human CD200R1 / Fc Chimera with a linear range of 0.12-16 ng/ml.

#### Purity

> 94 % as determined by SDS-PAGE

#### Endotoxin

< 1.0 EU per µg of the protein as determined by the LAL method

#### Stability

Samples are stable for up to twelve months from date of receipt at -70°C

#### Predicted N terminal

Ala 27

#### Molecular Mass

The secreted recombinant human CD200R1/Fc is a disulfide-linked homodimeric protein. The reduced monomer comprises 488 amino acids and has a predicted molecular mass of 54.9 kDa. As a result of glycosylation, rh CD200R1/Fc monomer migrates as an approximately 90-100 kDa band in SDS-PAGE under reducing conditions.

### Formulation

Lyophilized from sterile PBS, pH 7.4

1. 5 % trehalose and mannitol are added as protectants before lyophilization.

2. Please contact us for any concerns or special requirements.

### Usage Guide

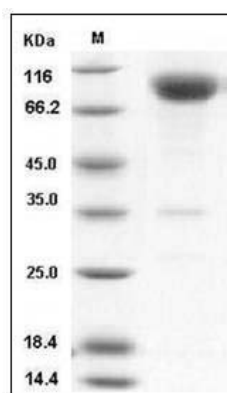
#### Storage

Store it under sterile conditions at -20°C to -80°C. It is recommended that the protein be aliquoted for optimal storage. Avoid repeated freeze-thaw cycles.

#### Reconstitution

Adding sterile water, prepare a stock solution of 0.25 mg/ml. Concentration is measured by UV-Vis.

#### SDS-PAGE



Human CD200R1 Protein (His & Fc Tag) SDS-PAGE