

# CD300LG antibody



Catalog Number: 109024

---

## Product name

CD300LG antibody

## Specificity

Human; other species not tested.

## Antibody description

CD300LG Rabbit Polyclonal antibody. Positive WB detected in human kidney tissue, HepG2 cells. Observed molecular weight by Western-blot: 36 kDa

## Preparation

This antibody was obtained by immunization of CD300LG recombinant protein (Accession Number: NM\_145273). Purification method: Antigen affinity purified.

## Formulation

PBS with 0.02% sodium azide and 50% glycerol pH 7.3.

## Storage

Store at -20°C. DO NOT ALIQUOT

## Clonality

Polyclonal

## Ig Type

Rabbit IgG

## Applications

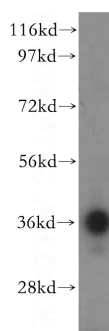
ELISA, WB

## Dilutions

Recommended Dilution:

WB: 1:500-1:5000

## Validations



human kidney tissue were subjected to SDS PAGE followed by western blot with Catalog No:109024(CD300LG antibody) at dilution of 1:500