

# Anti-IL20RB antibody



Catalog Number: 106024

## Product name

Anti-IL20RB antibody

## Immunogen

[Rat IL20RB \(His Tag\) recombinant protein](#)

## Specificity

Rat IL20RB

## Antibody description

Rabbit polyclonal to IL20RB

## Preparation

Produced in rabbits immunized with purified, recombinant Rat IL20RB (rh IL20RB; B8K1X9; Met1-Pro227). IL20RB specific IgG was purified by Rat IL20RB affinity chromatography.

## Formulation

0.2 µm filtered solution in PBS

## Storage

This antibody can be stored at 2°C-8°C for one month without detectable loss of activity. Antibody products are stable for twelve months from date of receipt when stored at -20°C to -80°C.

Preservative-Free.

Sodium azide is recommended to avoid contamination (final concentration 0.05%-0.1%). It is toxic to cells and should be disposed of properly. Avoid repeated freeze-thaw cycles.

## Clonality

Polyclonal

## Ig Type

Rabbit IgG

## Applications

ELISA, WB

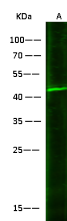
## Dilutions

WB: 10-20 µg/ml

ELISA: 0.1-0.2 µg/mL

This antibody can be used at 0.1-0.2 µg/mL with the appropriate secondary reagents to detect Rat IL20RB. The detection limit for Rat IL20RB is 0.00975 ng/well.

## Validations



Lanes	
Items	A
Sample (whole cell lysate)	HeLa
Sample Volume (µg/lane)	30
Gel	13% SDS-PAGE reducing gel
Recommended Concentration	10-20 µg/ml
Secondary Antibody	Dylight 800-labeled Antibody To Rabbit IgG (H+L), at 1:5000 dilution.

IL20RB Antibody, Rabbit PAb, Antigen Affinity Purified, Western blot