

PML antibody

Catalog Number: 114024

Product name

PML antibody

Specificity

Human; other species not tested.

Antibody description

PML Rabbit Polyclonal antibody. Positive IP detected in HEK-293 cells. Positive WB detected in HEK-293 cells. Observed molecular weight by Western-blot: 120 kDa

Preparation

This antibody was obtained by immunization of PML recombinant protein (Accession Number: NM_033250). Purification method: Antigen affinity purified.

Formulation

PBS with 0.1% sodium azide and 50% glycerol pH 7.3.

Storage

Store at -20°C. DO NOT ALIQUOT

Clonality

Polyclonal

Ig Type

Rabbit IgG

Applications

ELISA, WB, IP

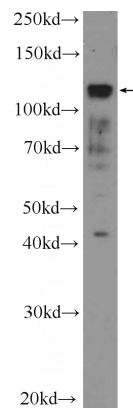
Dilutions

Recommended Dilution:

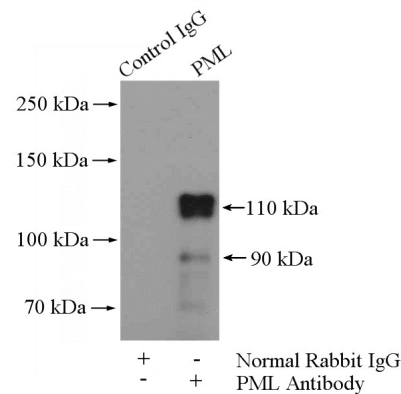
WB: 1:200-1:1000

IP: 1:200-1:2000

Validations



HEK-293 cells were subjected to SDS PAGE followed by western blot with Catalog No:114024(PML Antibody) at dilution of 1:300



IP Result of anti-PML (IP:Catalog No:114024, 4ug; Detection:Catalog No:114024 1:500) with HEK-293 cells lysate 3200ug.