

Anti-SULT2B1 antibody



Catalog Number: 103024

Product name

Anti-SULT2B1 antibody

Immunogen

[Human SULT2B1 \(His Tag\) recombinant protein](#)

Specificity

Human SULT2B1

No cross-reactivity in ELISA with Human SULT2A1

Antibody description

Rabbit monoclonal to SULT2B1

Preparation

This antibody was obtained from a rabbit immunized with purified, recombinant Human SULT2B1 (rh SULT2B1; NP_004596.2; Asp 2-Ser 365)

Formulation

0.2 μ m filtered solution in PBS with 5% trehalose

Storage

This antibody can be stored at 2°C-8°C for one month without detectable loss of activity. Antibody products are stable for twelve months from date of receipt when stored at -20°C to -80°C.

Preservative-Free.

Sodium azide is recommended to avoid contamination (final concentration 0.05%-0.1%). It is toxic to cells and should be disposed of properly. Avoid repeated freeze-thaw cycles.

Clonality

Monoclonal

Ig Type

Rabbit IgG

Applications

ELISA, WB, IP

Dilutions

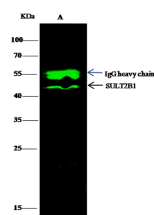
WB: 10-20 μ g/ml

ELISA: 0.1-0.2 μ g/mL

This antibody can be used at 0.1-0.2 μ g/mL with the appropriate secondary reagents to detect Human SULT2B1. The detection limit for Human SULT2B1 is approximately 0.00245 ng/well.

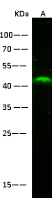
IP: 1-4 μ g/mg of lysate

Validations



Lanes	A
Sample (whole cell lysate)	MCF-7
Sample quantity	0.5 μ g
IP antibody quantity	2 μ g
Protein G agarose	15 μ l of 50% Protein G Agarose
Gel	15% SDS-PAGE reducing gel
Primary antibody	SULT2B1 antibody at 10 μ g/ml
Secondary antibody	Dylight 800-labeled antibody to rabbit IgG (H+L), at 1:5000 dilution.

SULT2B1 Antibody, Rabbit MAb



Lanes	A
Sample (whole cell lysate)	MCF7
Sample Volume (μ g/lane)	30
Gel	15% SDS-PAGE reducing gel
Recommended Concentration	10-20 μ g/ml
Secondary Antibody	Dylight 800-labeled Antibody to Rabbit IgG (H+L), at 1:5000 dilution.
Developed using Odyssey imaging system.	
Explanation	Predicted band size: ~41 kDa Observed band size: ~41 kDa

SULT2B1 Antibody, Rabbit MAb, Western blot