

# KDM2A antibody

Catalog Number: 112024

## Product name

KDM2A antibody

## Specificity

Human, Mouse; other species not tested.

## Antibody description

KDM2A Rabbit Polyclonal antibody. Positive IP detected in HeLa cells. Positive WB detected in Jurkat cells, NIH/3T3 cells. Observed molecular weight by Western-blot: 126 kDa

## Preparation

This antibody was obtained by immunization of KDM2A recombinant protein (Accession Number: NM\_012308). Purification method: Antigen affinity purified.

## Formulation

PBS with 0.1% sodium azide and 50% glycerol pH 7.3.

## Storage

Store at -20°C. DO NOT ALIQUOT

## Clonality

Polyclonal

## Ig Type

Rabbit IgG

## Applications

ELISA, WB, IP

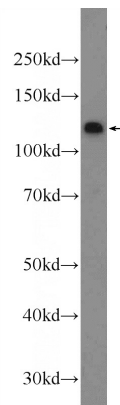
## Dilutions

Recommended Dilution:

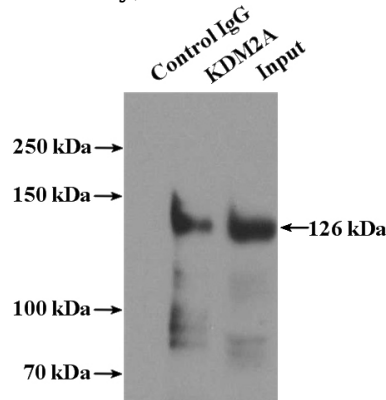
WB: 1:500-1:5000

IP: 1:200-1:2000

## Validations



Jurkat cells were subjected to SDS PAGE followed by western blot with Catalog No:112024(KDM2A Antibody) at dilution of 1:1000



IP Result of anti-KDM2A (IP:Catalog No:112024, 4ug; Detection:Catalog No:112024 1:600) with HeLa cells lysate 1600ug.